



# APARTMENTS

Desmai



PGA CATALUNYA  
RESORT



# APARTMENTS Desmai

CONTEMPORARY, ELEGANT PROPERTIES SHOWCASING  
THE LATEST IN DESIGN INNOVATION

---

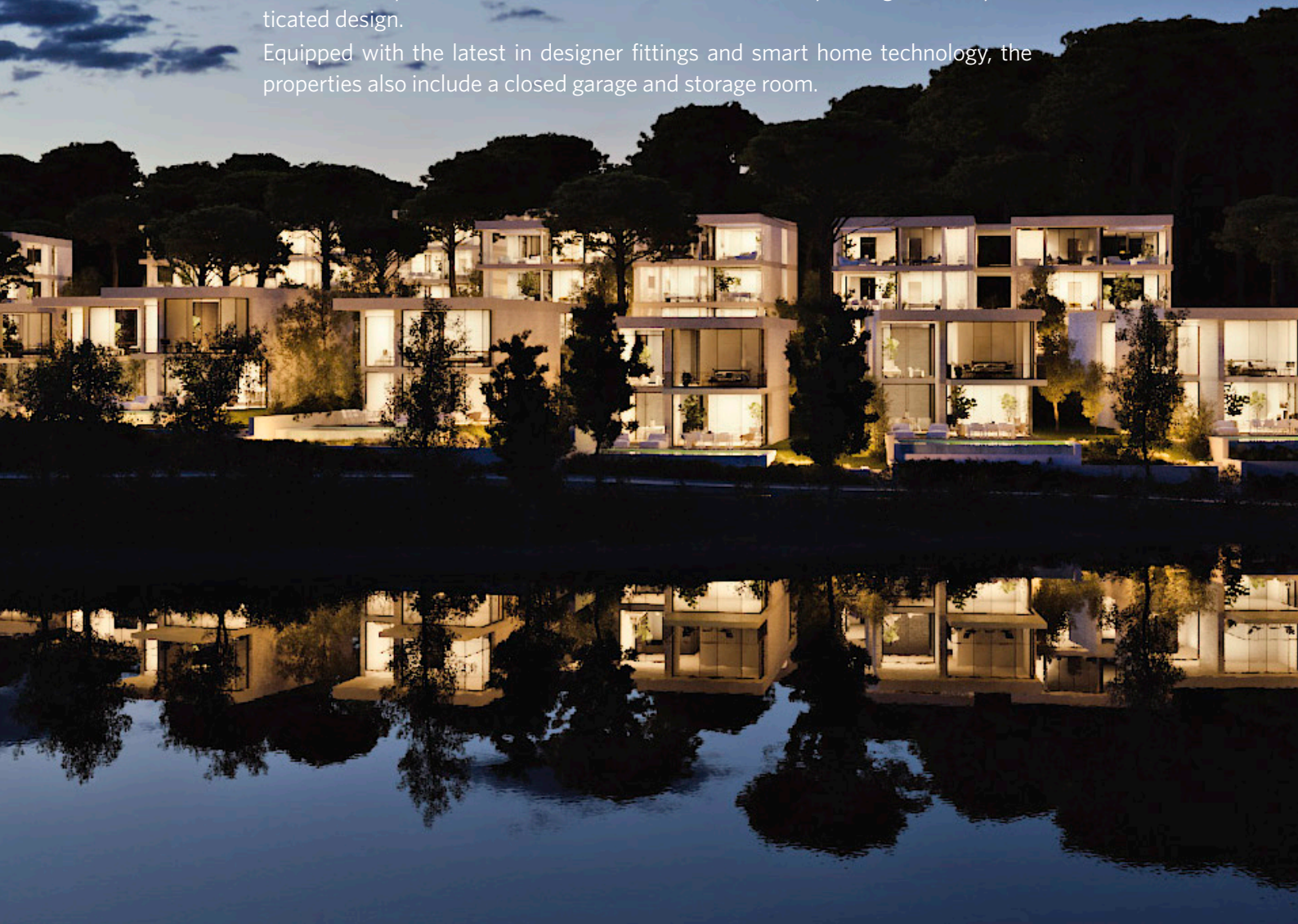
Situated in the southern part of PGA Catalunya Resort, the Desmai Apartments are the most innovative properties on the complex. Designed by the Barcelona studio of award-winning architect Jaime Prous, the apartments are carefully integrated into the surrounding landscape - highlighting a clear commitment to respect nature.

These exclusive properties, located in a peaceful wooded area on the resort, showcase the latest techniques in sustainable design that place both the environment, and the wellbeing of its residents at its centre. Key concepts taken into account include the natural environment, the breathtaking views, the sun, the site's relationship to water and the careful choice of materials.

The complex is built around an elegant pool - designed to emulate a lake - complete with sundeck and outdoor lounge space. The trees between the apartments enhance privacy, while allowing for exceptional views over the most iconic lake and fairways of the Stadium course.

The elegant apartments each have three bedrooms, including a master suite with walk-in wardrobe. The open-plan living space is filled with light thanks to floor-to-ceiling windows that bring the outside in, and open on to a generous terrace with spectacular views. The overall feel is one of space, light and sophisticated design.

Equipped with the latest in designer fittings and smart home technology, the properties also include a closed garage and storage room.











## BASIC DETAILS

ARCHITECT	Jaime Prous
BUILT AREA	From 105 m <sup>2</sup>
PORCHES AND TERRACES	From 18 m <sup>2</sup>
PRIVATE GARDEN	From 95 m <sup>2</sup>
BEDROOMS	3
BATHROOMS	2
PRIVATE PARKING	17 m <sup>2</sup>
STORAGE ROOM	4 m <sup>2</sup>
COMMUNAL AREA	Infinity pool

## EQUIPMENT

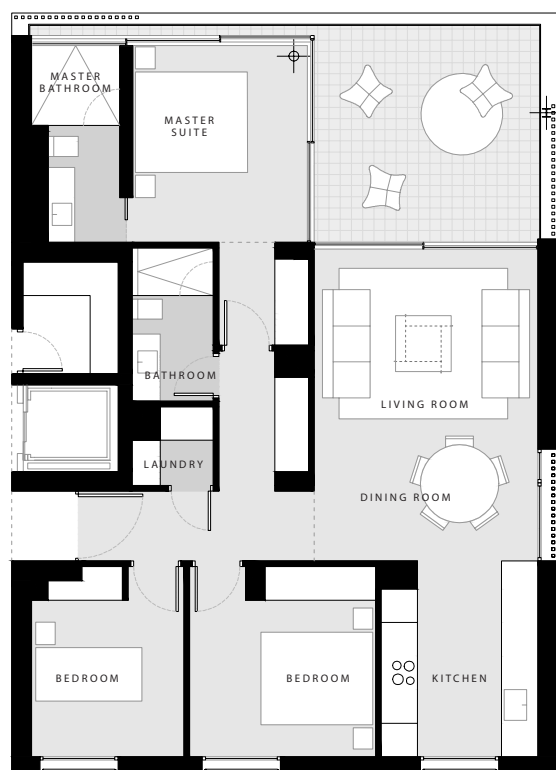
KITCHEN	Bulthaup, Neff or Novy
BATHROOMS	Geberit, Roca, Tres
AIR CONDITIONING	Mitsubishi or similar
HEATING	Radiant floor
DOMOTICS	Control 4
COMMUNICATIONS	Optical Fibre, Wi-Fi Amplifier
ENERGY QUALIFICATION	Rating B

This is a document provided for information purposes only, the Developer reserves the right to modify the figures and features & specifications because of technical or legal circumstances. The developer reserves the right to change the finishes for others of equal or higher quality than those specified. Computer generated image for illustrative purposes only. Consumption and emission values are for guidance only and correspond to a standard home with a specific location, orientation and finishing materials.

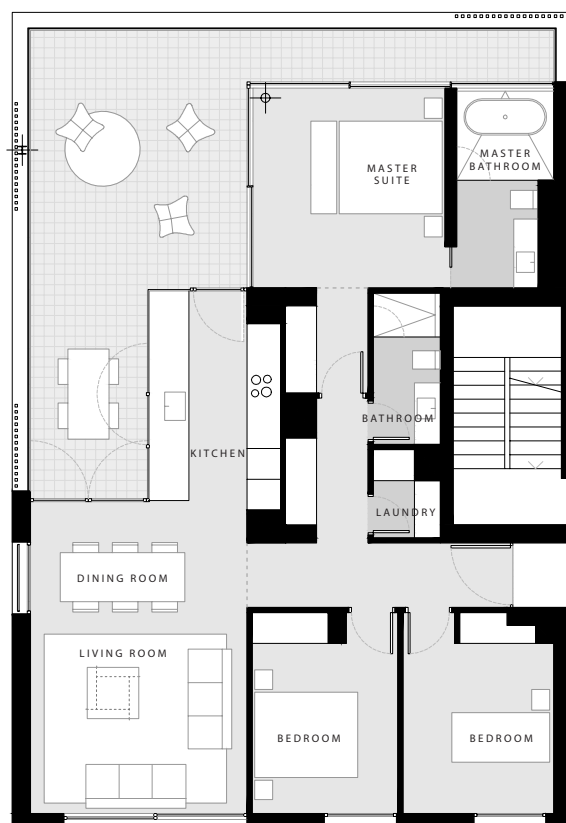


Built area from 105 m<sup>2</sup>

Porches and terraces from 18 m<sup>2</sup>



APARTMENT A P.1.1



APARTMENT A P.1.2



## YOUR NEW HOME AT PGA CATALUNYA RESORT



### CONTACT

PGA Catalunya Resort  
Carretera N-II km701, 17455 Caldes de Malavella,  
Girona, Spain

Tel: +34 972 472 957  
[realestate@pgacatalunya.com](mailto:realestate@pgacatalunya.com)  
[www.pgacatalunya.com](http://www.pgacatalunya.com)