



PROJECT

LA MADDALENA SEA HOUSE



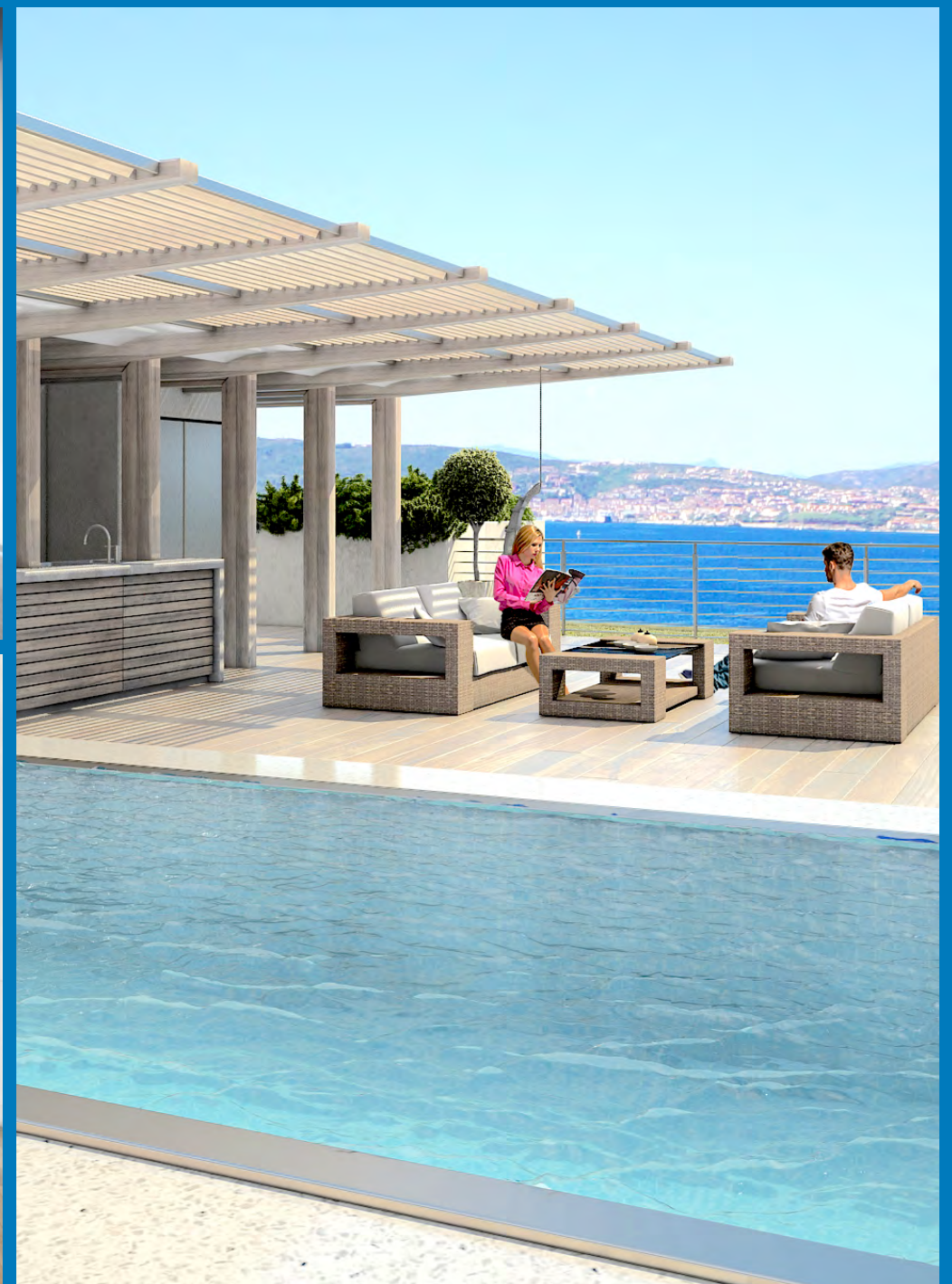
5 villas in exclusive elevated & panoramic sea front position with private yacht mooring
huge window doors to be completely opened - wood floors & decks - customized pools & tubs

DEVELOPMENT
CONTACT

BLUE ARCH, BOLZANO

heck@la-maddalena-seahouse.it

120 - 370 sqm with 2-6 Bedrooms & bathrooms - terraces - garage



particular outdoor solutions - maldivian outdoor style bathrooms - open-air kitchens
 individual creations - top quality furnishings - acquisition & final equipment
 remote control - video surveillance - permanent maintenance & individual services
 all day sun exposure - new generation energy saving systems - local materials
 gated community - concierge service - wellness



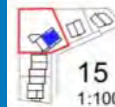
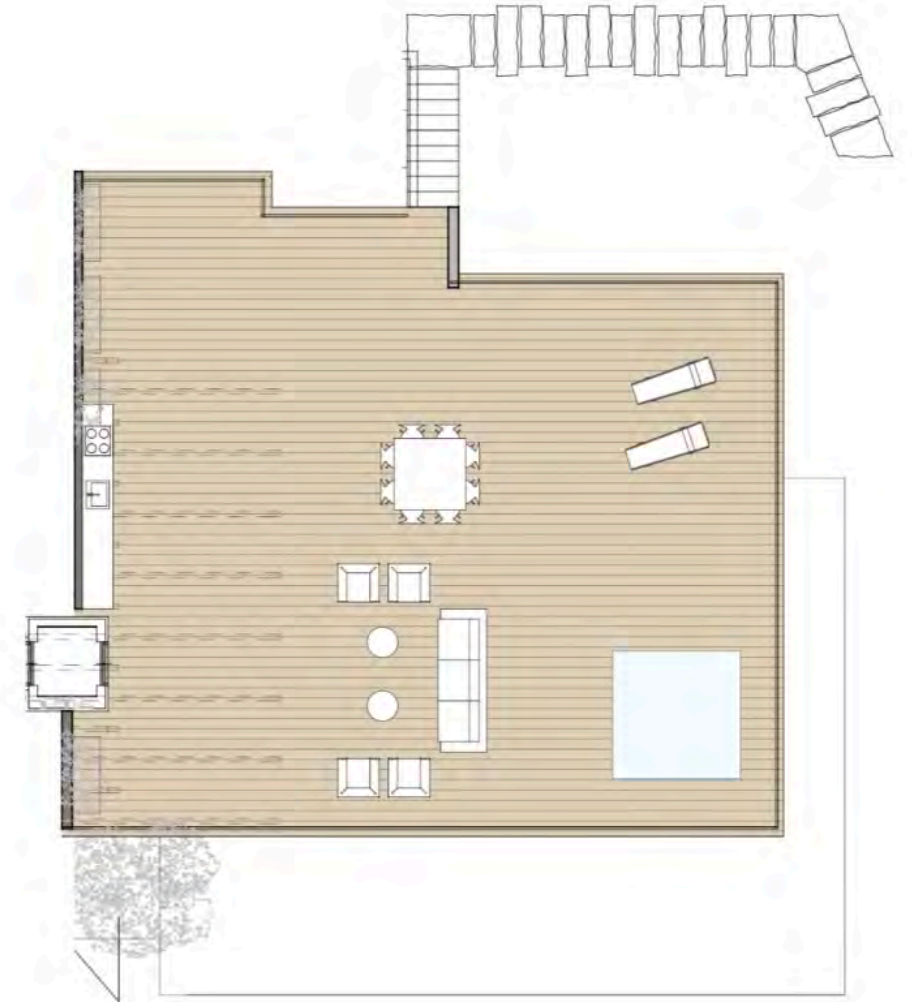


blue ARCH

Proposta di arredamento indicativa
TYPE F3 (UF)
 UPPER FLOOR



blue ARCH



blue ARCH

Proposta di arredamento indicativa
TYPE F3 (T)
 TERRACE

Example: Double Sea Penthouse Villa Maddalena 3GH

The spacious individually configurable ground plan foresees a total of 2-3 bedrooms and bathrooms and provides a living area including an open living-kitchen solution. Elevator, intelligent storage solutions, open-air kitchen and gazebo on the roof terrace with a private hot tub/pool and private garden make living comfortable and luxurious.

Living area : 163 sqm approx

Terrace : 166 sqm approx

Garden : 597 sqm approx

Com.Area : 306 sqm approx

