



EL BOSC

VILLAS



PGA CATALUNYA
GOLF AND WELLNESS

Set in a 500 hectare Catalan countryside, with exceptional views over the Stadium Course, the El Bosc villas sit peacefully in the southern corner of PGA Catalunya.

Designed to maximise the tranquility of nearby lakes, award-winning Barcelona Studio Jaime Prous Architects blends sustainability, wellbeing and design into each of these unique properties.

Residents will benefit from the proximity to an abundance of activities on their doorstep, from a round of golf on PGA Catalunya's European Tour Golf Courses to a relaxing afternoon spent at the Wellness Centre. Food lovers can simply step out into the Mediterranean kitchen garden and pick their own produce too.

Our IAGTO sustainability award-winning resort offer a warm community feeling while maintaining its unique Mediterranean environment.

pgacatalunya.com



PGA CATALUNYA
GOLF AND WELLNESS

EL BOSC VILLAS

Contemporary Mediterranean Villas Open your door to nature

This innovative new complex of villas sits just 20 metres from the resort's most prestigious lake with views over the 3rd, 4th, 11th and 12th holes of PGA Catalunya's Stadium Course. The minimalist glass-fronted design is built sustainably, with insulations to minimise energy consumption as well as moveable eaves to keep you cool in the summer months.

The sustainability factor doesn't end there; rainwater at the complex is recycled to be used for watering plants, while solar panels heat your water. With such a beautiful, natural setting on your doorstep, the architects have ensured you are able to fully enjoy the environment.

Glide along the natural oak floor towards the bright, white kitchen, looking out towards the breathtaking Mediterranean landscape. The house is bathed in natural light, designed to put your health and wellbeing at the forefront.

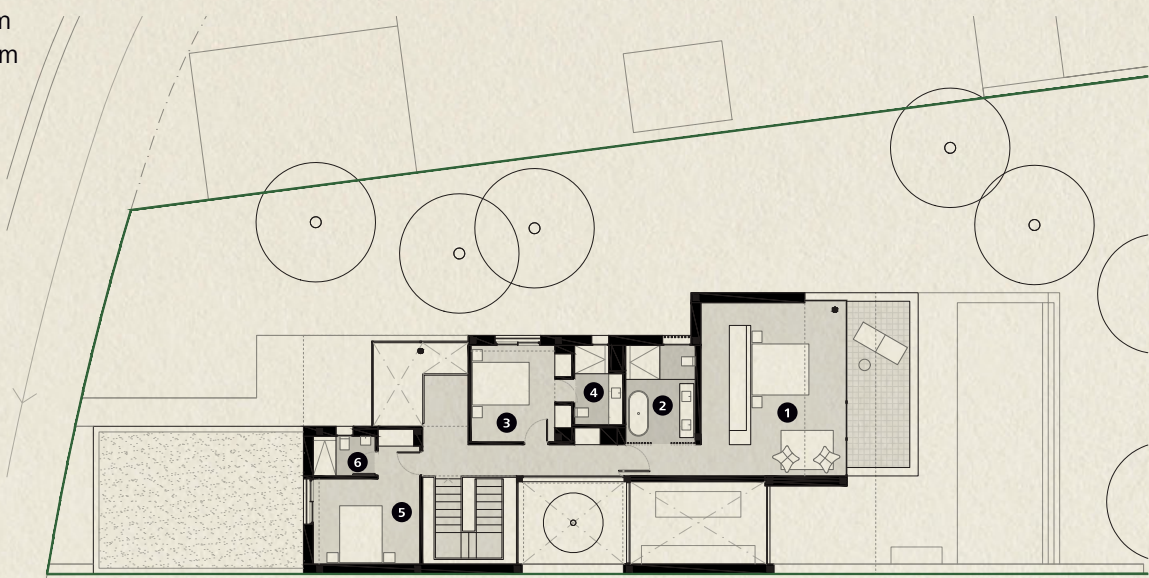
Each property benefits from an open-plan outdoor area, perfect to enjoy a summer barbeque or al-fresco dining. And, with large doors opening into our serene landscape, you'll be able to bring the peaceful setting into your home.





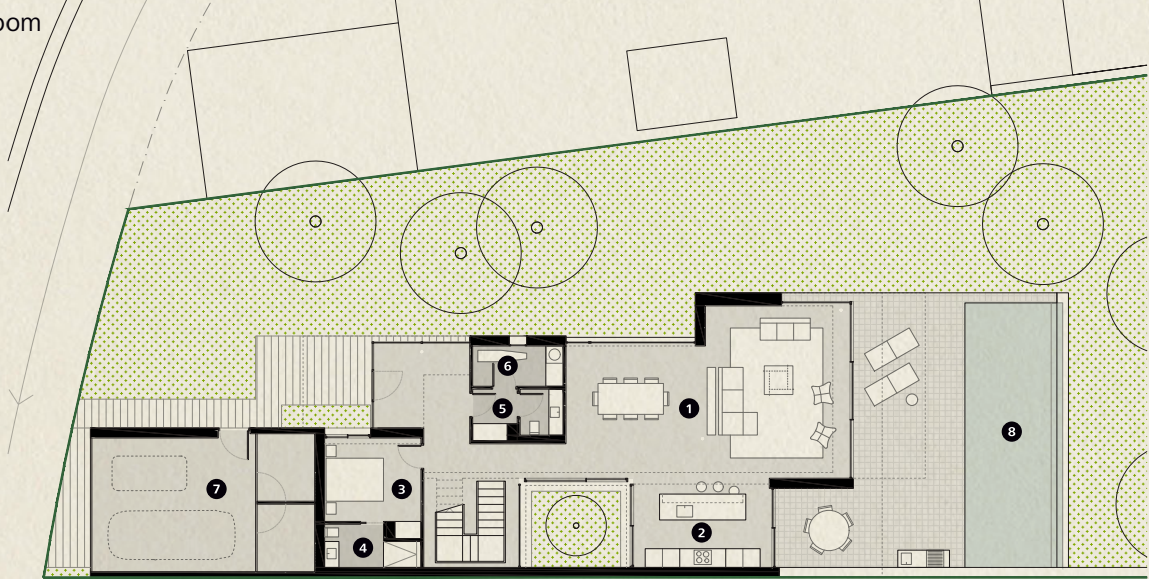
First Floor

- 1 Master Bedroom
- 2 Master Bathroom
- 3 Bedroom
- 4 Bathroom
- 5 Bedroom
- 6 Bathroom



Ground Floor

- 1 Dining Living Room
- 2 Kitchen
- 3 Bedroom
- 4 Bathroom
- 5 Guest Toilet
- 6 Laundry
- 7 Parking
- 8 Swimming



Specifications

Architect	Jaime Prous Arquitectes
Plot	584,82 m²
Built area	474,37 m²
Porches and Terraces	125,85 m²
Bedrooms	4
Bathrooms	4
Guest toilet	1
Private Parking	26,93 m²
Swimming Pool	30,69 m²
Kitchen	Bulthaup
Bathrooms	Geberit Fiora Roca Tres
Air Conditioning	Mitsubishi
Heating	Heating floor
Domotics	Control 4
Communications	Optical Fibre, Wi-Fi Access Points
Energy Qualification	Rating B



This is a document provided for information purposes only, the Developer reserves the right to modify the figures and features & specifications because of technical or legal circumstances. The developer reserves the right to change the finishes for others of equal or higher quality than those specified. Computer generated image for illustrative purposes only. Consumption and emission values are for guidance only and correspond to a standard home with a specific location, orientation and finishing materials.



Resort Map

<p>Luxury4you Immobilien</p> <p>Tel.: +49 821 74909 671 Fax: +49 821 74909 672 Mobil: +49 175 267 75 07 Email: info@luxury4you.eu www.luxury4you.eu</p>	<p>BELLEVUE BEST PROPERTY AGENTS 2021</p>	<p>ImmoWelt Diamond Partner</p>
<p>NEWSLETTER JETZT ANMELDEN</p>		