

DARGLOBAL

DC1

F A C T S H E E T

THIS IS NOT  
ANOTHER TOWER BY  
THE DUBAI CANAL.

THIS IS THE ONE.  
THIS IS DG1.



# DG1

DG1 is the first tower of its kind designed by DarGlobal, the visionary brand that was among the first to introduce luxury brands into living spaces in Dubai.



*automobili*  
**Lamborghini**

**W**  
HOTELS  
WORLDWIDE

**MISSONI**

**ELIE SAAB**

**VERSACE**  
HOME

**TRUMP**  
THE TRUMP ORGANIZATION

**PAGANI**

DARGLOBAL

# DC1

F L O O R P L A N S

# TYPICAL FLOOR PLAN GARDEN SUITES

LEVEL

01



PARTIAL  
VIEWS

PARTIAL  
VIEWS

- ONE BEDROOM
- TWO BEDROOMS
- THREE BEDROOMS

Disclaimer: All pictures, plans, layouts, information, data and details included in this brochure are indicative only and may change at any time up to the final 'as built' status in accordance with final designs of the project, regulatory approvals and planning permissions. All accessories and interior finishes such as wallpaper, chandeliers, furniture, electronics, white goods, curtains, hard and soft landscaping, pavements, features, gym, swimming pool(s) and other elements displayed in the brochure, or within the show apartment or between the plot boundary and the unit, are not part of the unit and are shown for illustrative purposes only.

CITY VIEWS

# TYPICAL FLOOR PLAN GARDEN SUITES

LEVEL 01



- ONE BEDROOM
- TWO BEDROOMS
- THREE BEDROOMS

Disclaimer: All pictures, plans, layouts, information, data and details included in this brochure are indicative only and may change at any time up to the final 'as built' status in accordance with final designs of the project, regulatory approvals and planning permissions. All accessories and interior finishes such as wallpaper, chandeliers, furniture, electronics, white goods, curtains, hard and soft landscaping, pavements, features, gym, swimming pool(s) and other elements displayed in the brochure, or within the show apartment or between the plot boundary and the unit, are not part of the unit and are shown for illustrative purposes only.



PARTIAL  
VIEWS

PARTIAL  
VIEWS

CITY VIEWS

# TYPICAL FLOOR PLAN 01A

## LEVELS

02 - 04, 09 - 12

- ONE BEDROOM
- TWO BEDROOMS
- THREE BEDROOMS

Disclaimer: All pictures, plans, layouts, information, data and details included in this brochure are indicative only and may change at any time up to the final 'as built' status in accordance with final designs of the project, regulatory approvals and planning permissions. All accessories and interior finishes such as wallpaper, chandeliers, furniture, electronics, white goods, curtains, hard and soft landscaping, pavements, features, gym, swimming pool(s) and other elements displayed in the brochure, or within the show apartment or between the plot boundary and the unit, are not part of the unit and are shown for illustrative purposes only.



PARTIAL VIEWS

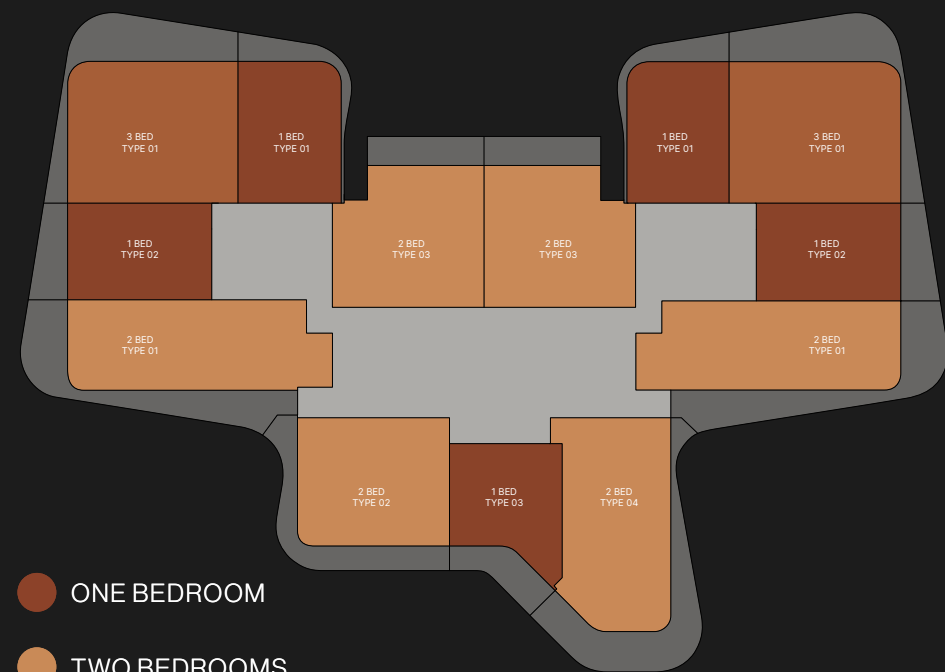
PARTIAL VIEWS

CITY VIEWS

# TYPICAL FLOOR PLAN 01A

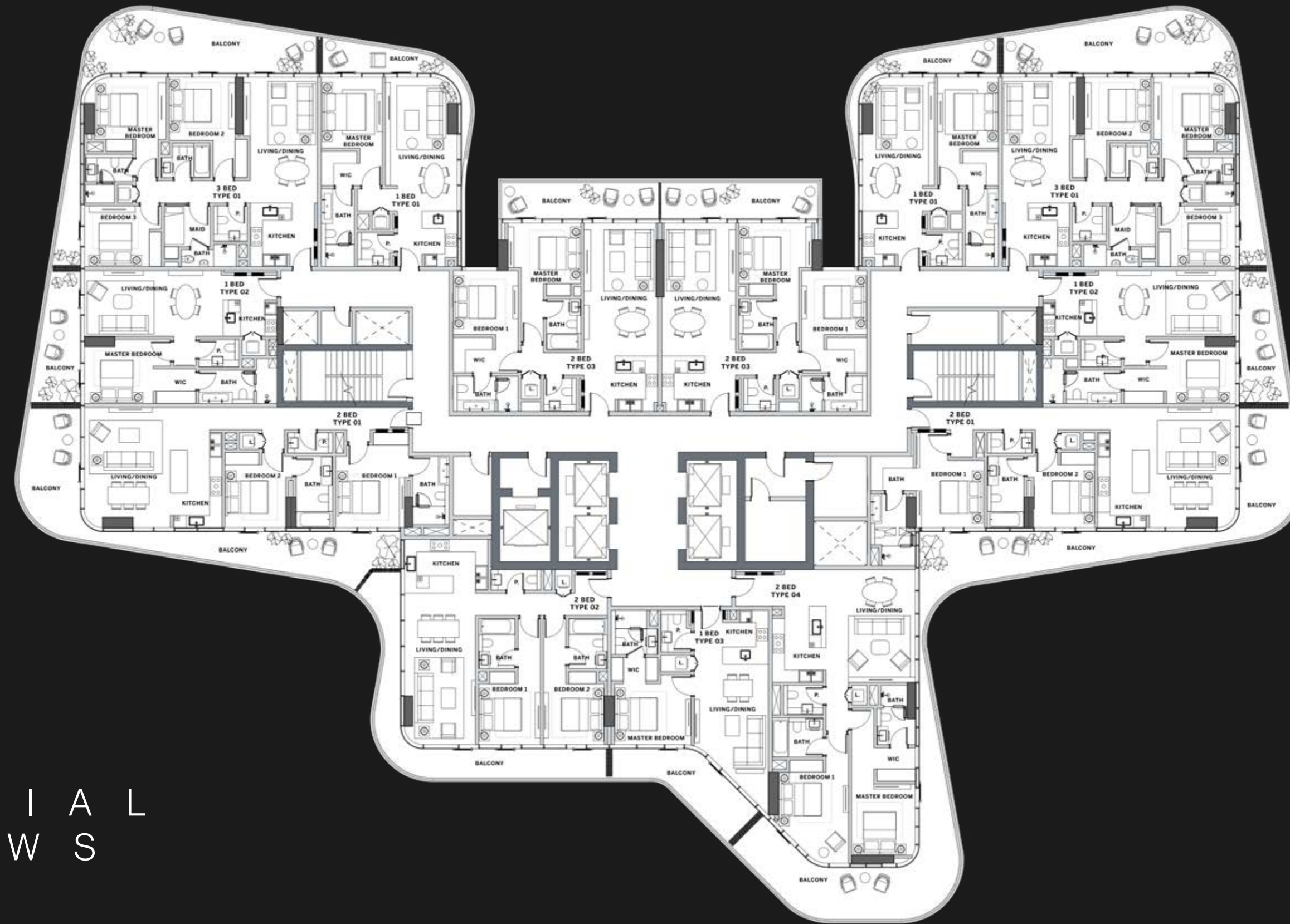
## LEVELS

02 - 04, 09 - 12



- ONE BEDROOM
- TWO BEDROOMS
- THREE BEDROOMS

Disclaimer: All pictures, plans, layouts, information, data and details included in this brochure are indicative only and may change at any time up to the final 'as built' status in accordance with final designs of the project, regulatory approvals and planning permissions. All accessories and interior finishes such as wallpaper, chandeliers, furniture, electronics, white goods, curtains, hard and soft landscaping, pavements, features, gym, swimming pool(s) and other elements displayed in the brochure, or within the show apartment or between the plot boundary and the unit, are not part of the unit and are shown for illustrative purposes only.



PARTIAL VIEWS

PARTIAL VIEWS

CITY VIEWS



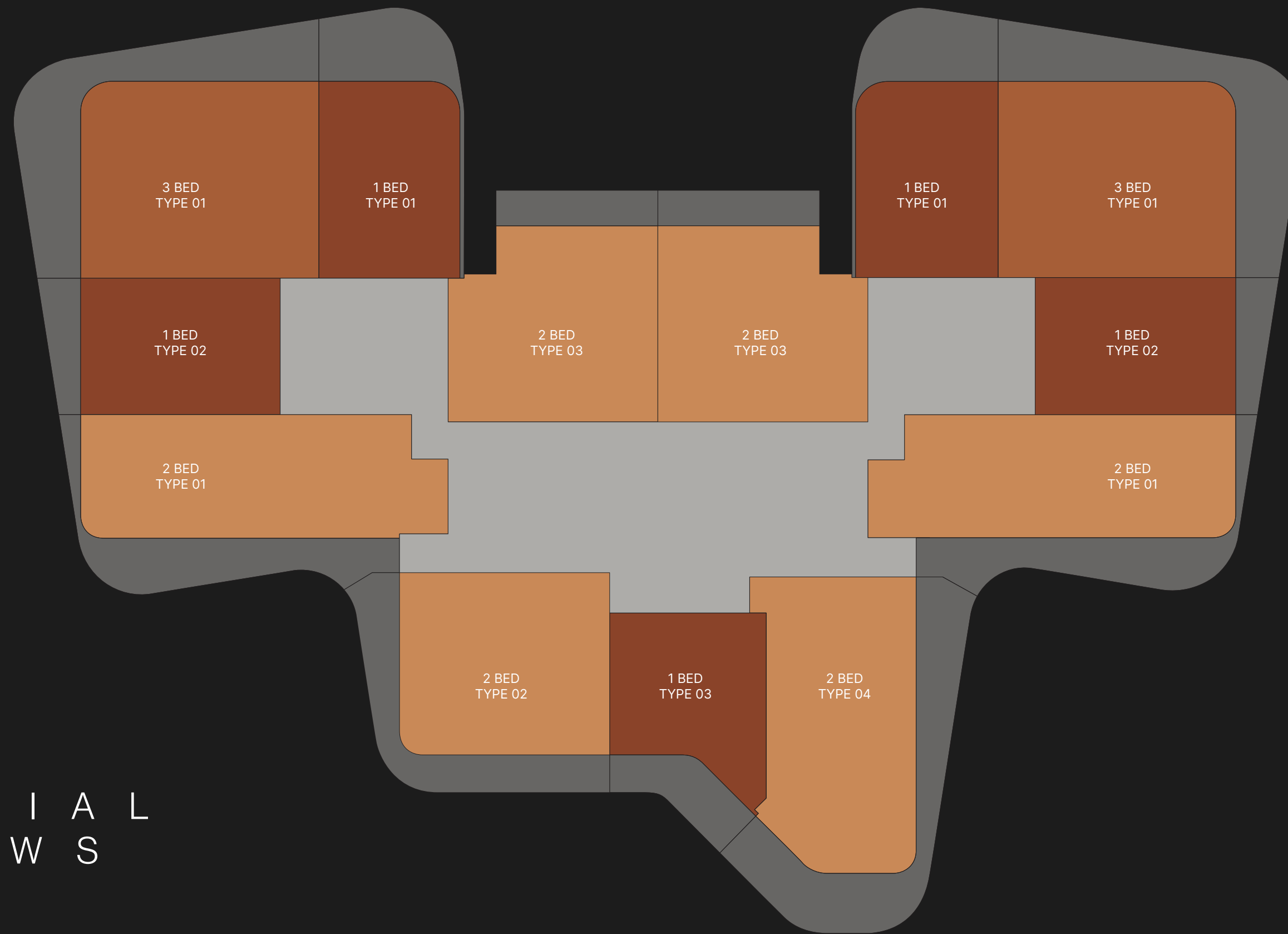
# TYPICAL FLOOR PLAN 01B

## LEVELS

05 - 08, 13 - 15

- ONE BEDROOM
- TWO BEDROOMS
- THREE BEDROOMS

Disclaimer: All pictures, plans, layouts, information, data and details included in this brochure are indicative only and may change at any time up to the final 'as built' status in accordance with final designs of the project, regulatory approvals and planning permissions. All accessories and interior finishes such as wallpaper, chandeliers, furniture, electronics, white goods, curtains, hard and soft landscaping, pavements, features, gym, swimming pool(s) and other elements displayed in the brochure, or within the show apartment or between the plot boundary and the unit, are not part of the unit and are shown for illustrative purposes only.



PARTIAL VIEWS

PARTIAL VIEWS

CITY VIEWS

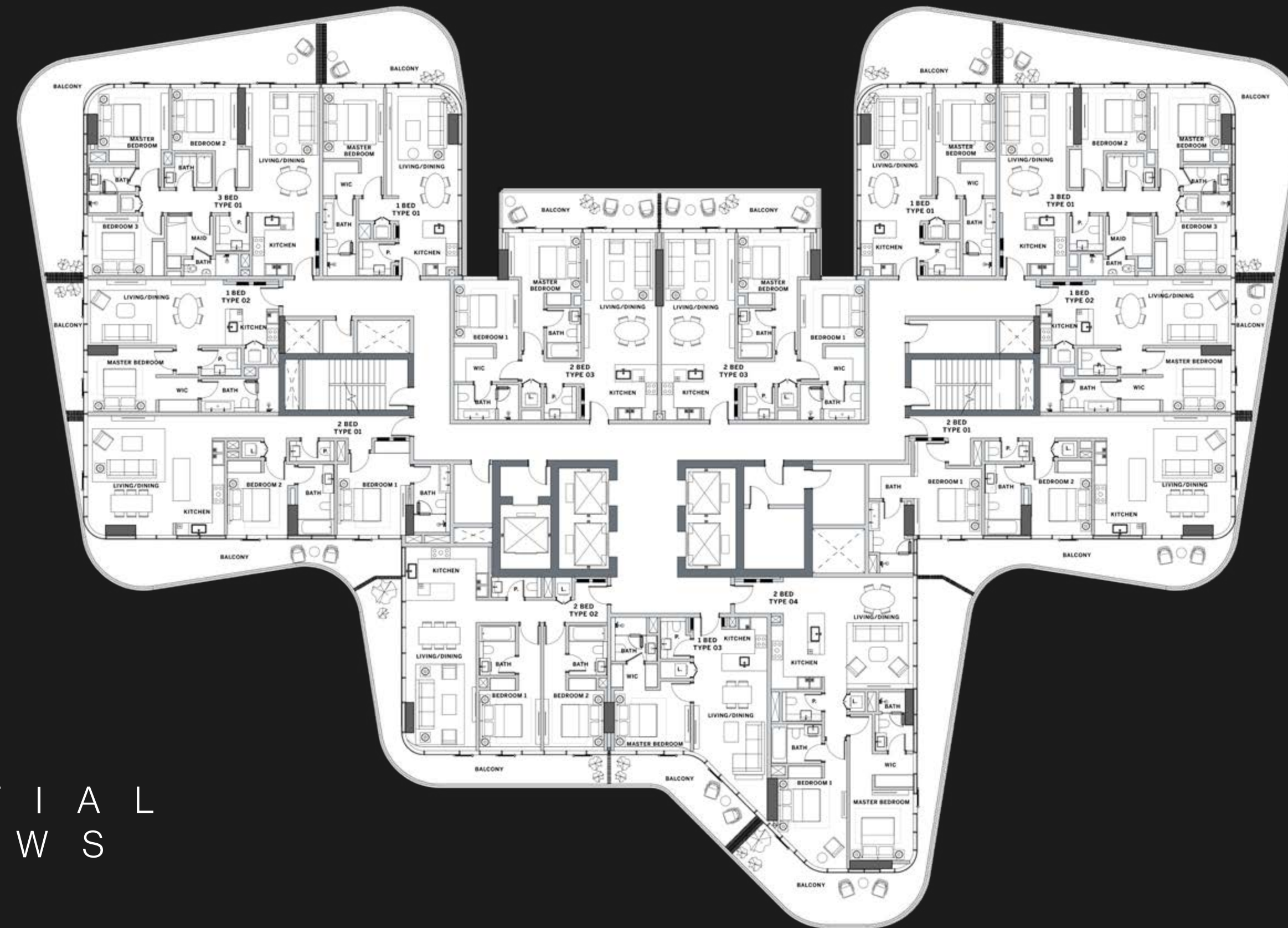
# TYPICAL FLOOR PLAN 01B

## LEVELS

05 - 08, 13 - 15



Disclaimer: All pictures, plans, layouts, information, data and details included in this brochure are indicative only and may change at any time up to the final 'as built' status in accordance with final designs of the project, regulatory approvals and planning permissions. All accessories and interior finishes such as wallpaper, chandeliers, furniture, electronics, white goods, curtains, hard and soft landscaping, pavements, features, gym, swimming pool(s) and other elements displayed in the brochure, or within the show apartment or between the plot boundary and the unit, are not part of the unit and are shown for illustrative purposes only.



PARTIAL  
VIEWS

PARTIAL  
VIEWS

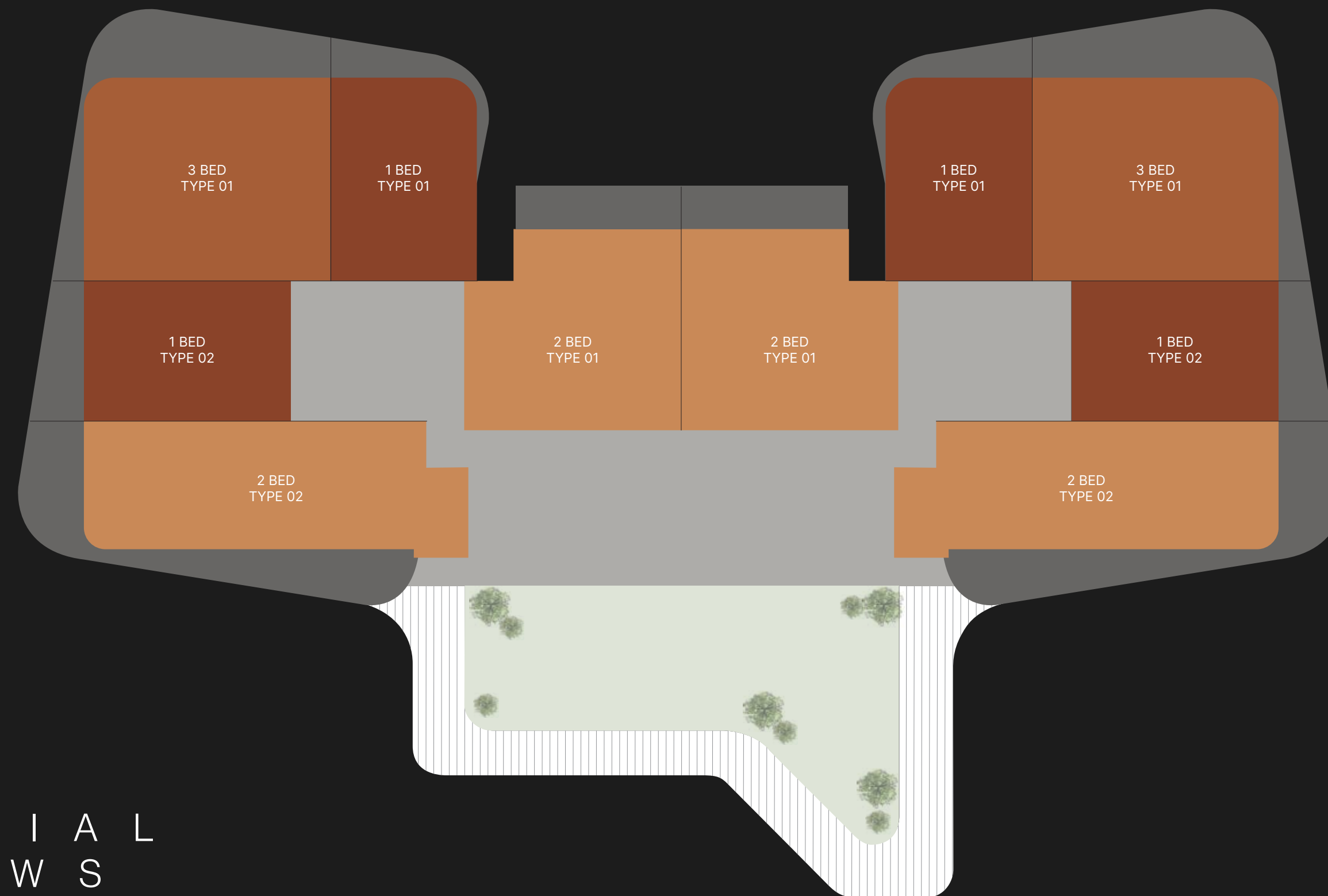
CITY VIEWS

# TYPICAL FLOOR PLAN SKY SUITES

LEVEL

16

DIRECT ACCESS TO  
THE SKY GARDEN



PARTIAL  
VIEWS

PARTIAL  
VIEWS

CITY  
VIEWS

- ONE BEDROOM
- TWO BEDROOMS
- THREE BEDROOMS

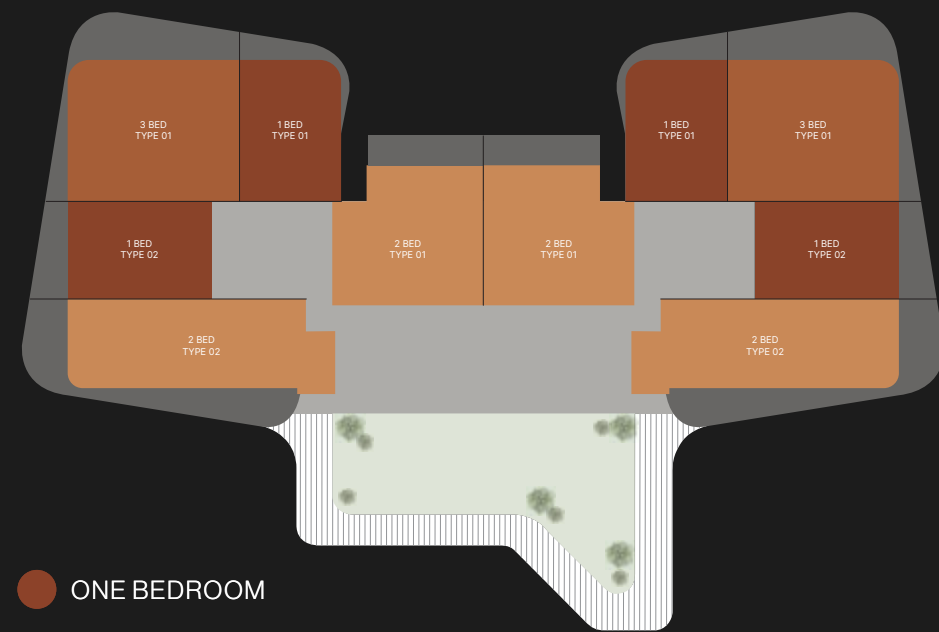
Disclaimer: All pictures, plans, layouts, information, data and details included in this brochure are indicative only and may change at any time up to the final 'as built' status in accordance with final designs of the project, regulatory approvals and planning permissions. All accessories and interior finishes such as wallpaper, chandeliers, furniture, electronics, white goods, curtains, hard and soft landscaping, pavements, features, gym, swimming pool(s) and other elements displayed in the brochure, or within the show apartment or between the plot boundary and the unit, are not part of the unit and are shown for illustrative purposes only.

# TYPICAL FLOOR PLAN SKY SUITES

LEVEL

16

DIRECT ACCESS TO  
THE SKY GARDEN



- ONE BEDROOM
- TWO BEDROOMS
- THREE BEDROOMS

Disclaimer: All pictures, plans, layouts, information, data and details included in this brochure are indicative only and may change at any time up to the final 'as built' status in accordance with final designs of the project, regulatory approvals and planning permissions. All accessories and interior finishes such as wallpaper, chandeliers, furniture, electronics, white goods, curtains, hard and soft landscaping, pavements, features, gym, swimming pool(s) and other elements displayed in the brochure, or within the show apartment or between the plot boundary and the unit, are not part of the unit and are shown for illustrative purposes only.



PARTIAL  
VIEWS

PARTIAL  
VIEWS

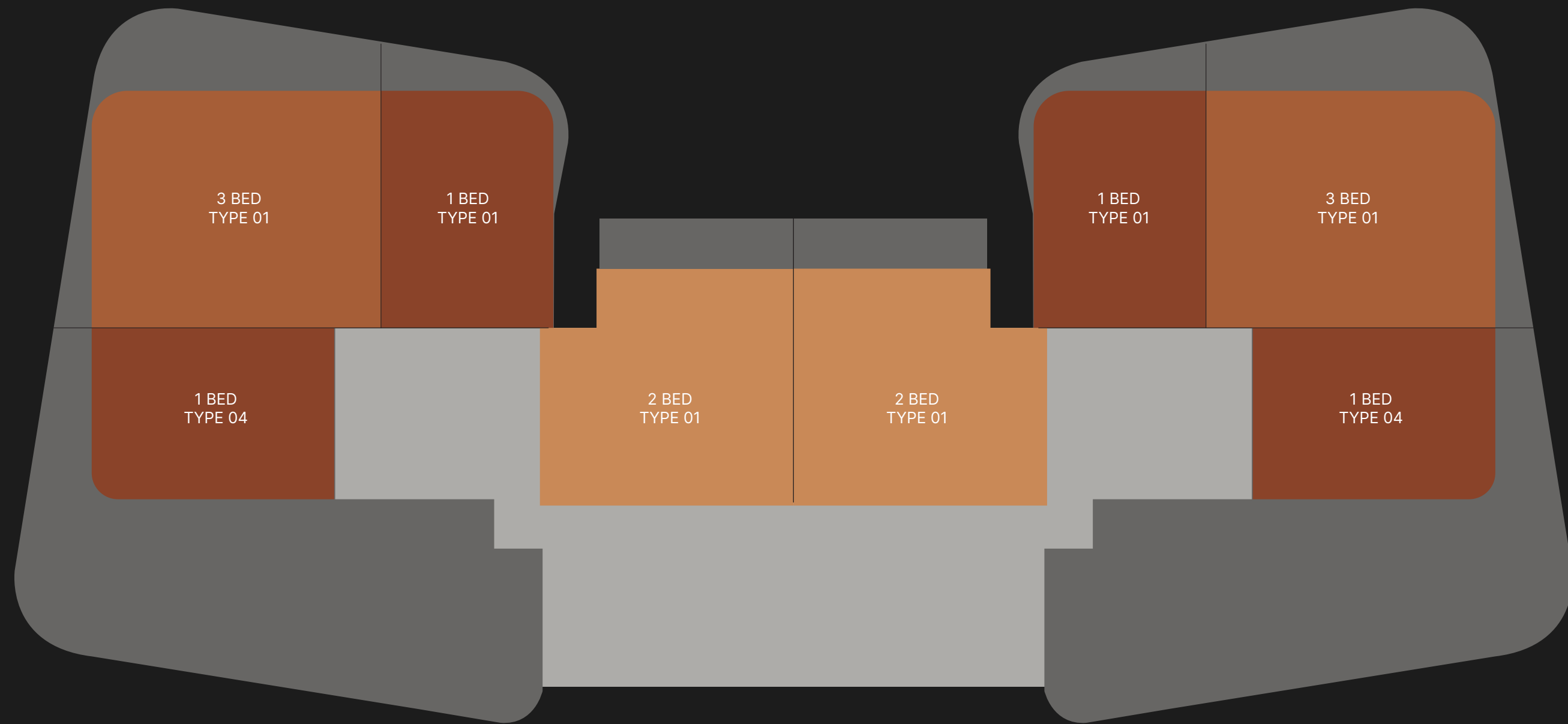
CITY VIEWS

# TYPICAL FLOOR PLAN SKY SUITES

LEVEL

17

OVERLOOKING  
THE SKY GARDEN



PARTIAL  
VIEWS

PARTIAL  
VIEWS

- ONE BEDROOM
- TWO BEDROOMS
- THREE BEDROOMS

Disclaimer: All pictures, plans, layouts, information, data and details included in this brochure are indicative only and may change at any time up to the final 'as built' status in accordance with final designs of the project, regulatory approvals and planning permissions. All accessories and interior finishes such as wallpaper, chandeliers, furniture, electronics, white goods, curtains, hard and soft landscaping, pavements, features, gym, swimming pool(s) and other elements displayed in the brochure, or within the show apartment or between the plot boundary and the unit, are not part of the unit and are shown for illustrative purposes only.

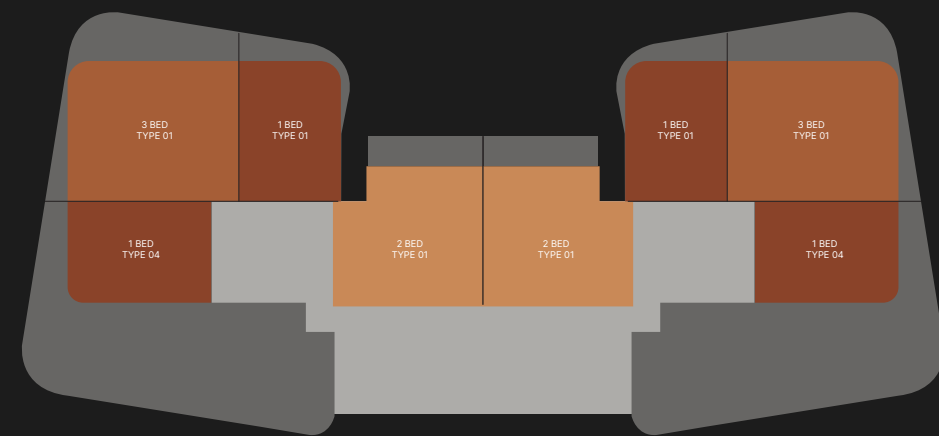
CITY VIEWS

# TYPICAL FLOOR PLAN SKY SUITES

LEVEL

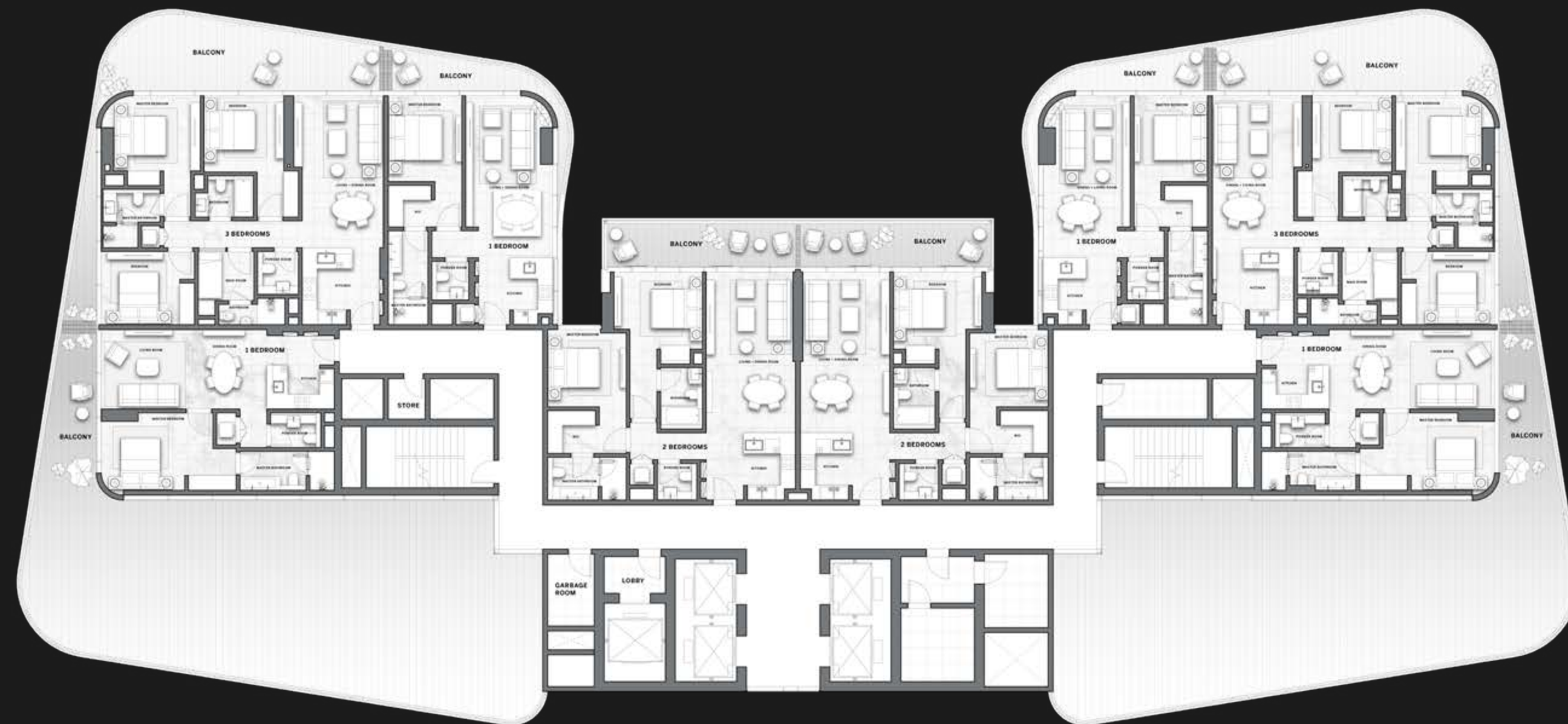
17

OVERLOOKING THE SKY GARDEN



- ONE BEDROOM
- TWO BEDROOMS
- THREE BEDROOMS

Disclaimer: All pictures, plans, layouts, information, data and details included in this brochure are indicative only and may change at any time up to the final 'as built' status in accordance with final designs of the project, regulatory approvals and planning permissions. All accessories and interior finishes such as wallpaper, chandeliers, furniture, electronics, white goods, curtains, hard and soft landscaping, pavements, features, gym, swimming pool(s) and other elements displayed in the brochure, or within the show apartment or between the plot boundary and the unit, are not part of the unit and are shown for illustrative purposes only.



PARTIAL  
VIEWS

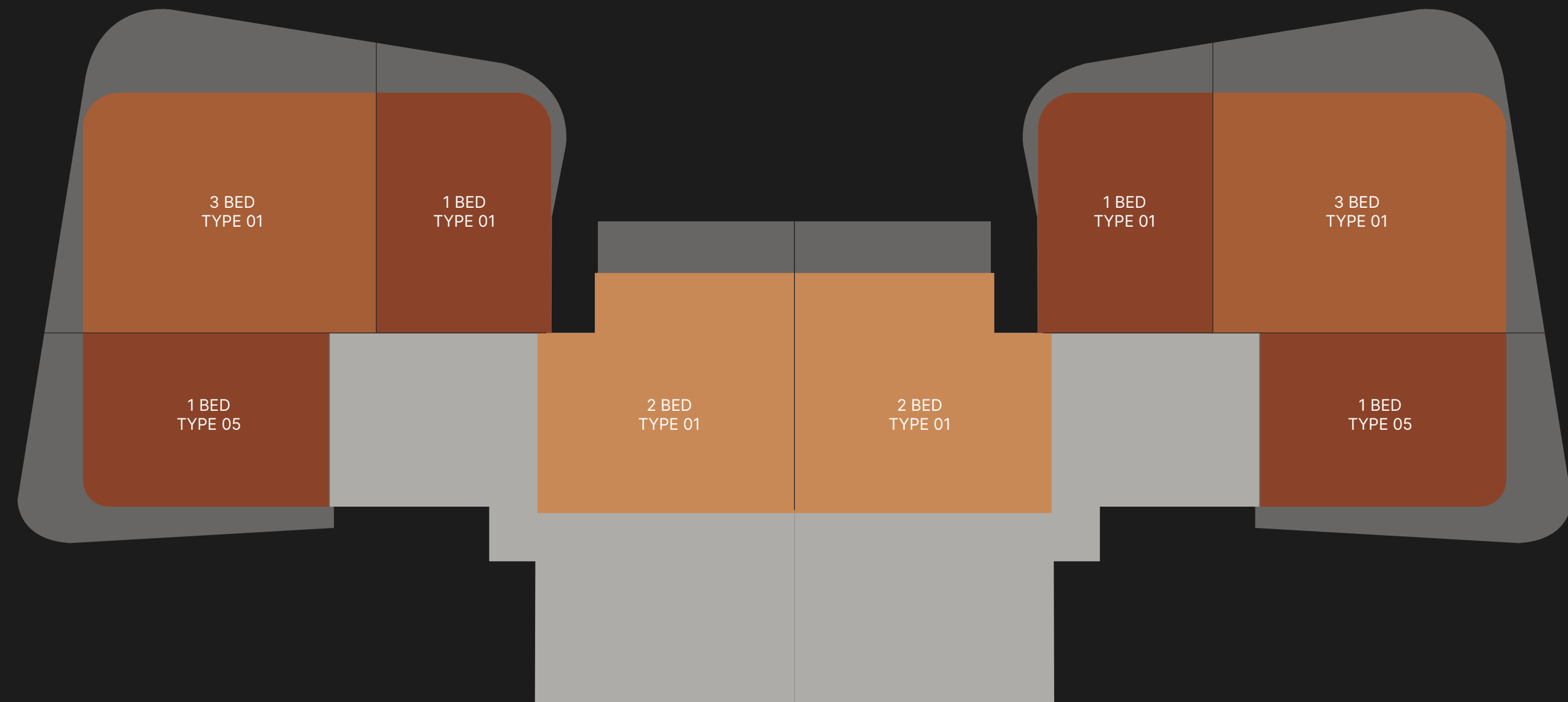
PARTIAL  
VIEWS

CITY VIEWS

# TYPICAL FLOOR PLAN SKY SUITES

LEVELS  
18 - 19

OVERLOOKING  
THE SKY GARDEN



PARTIAL  
VIEWS

PARTIAL  
VIEWS

- ONE BEDROOM
- TWO BEDROOMS
- THREE BEDROOMS

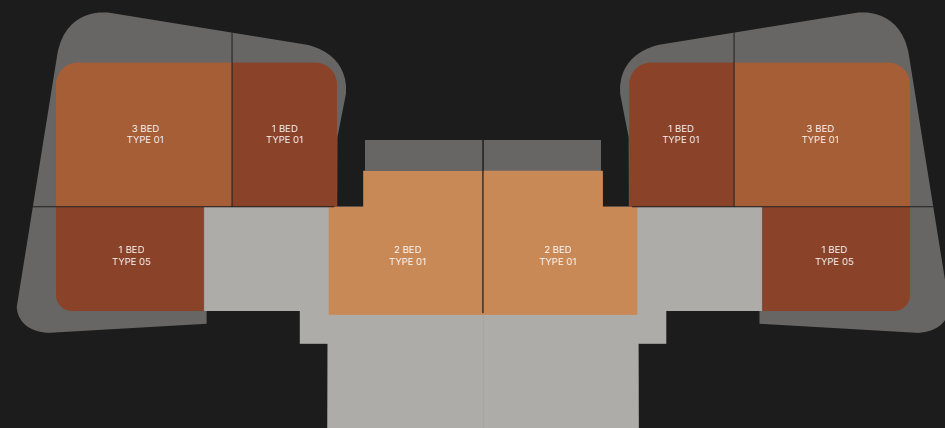
Disclaimer: All pictures, plans, layouts, information, data and details included in this brochure are indicative only and may change at any time up to the final 'as built' status in accordance with final designs of the project, regulatory approvals and planning permissions. All accessories and interior finishes such as wallpaper, chandeliers, furniture, electronics, white goods, curtains, hard and soft landscaping, pavements, features, gym, swimming pool(s) and other elements displayed in the brochure, or within the show apartment or between the plot boundary and the unit, are not part of the unit and are shown for illustrative purposes only.

CITY VIEWS

TYPICAL  
FLOOR PLAN  
SKY SUITES

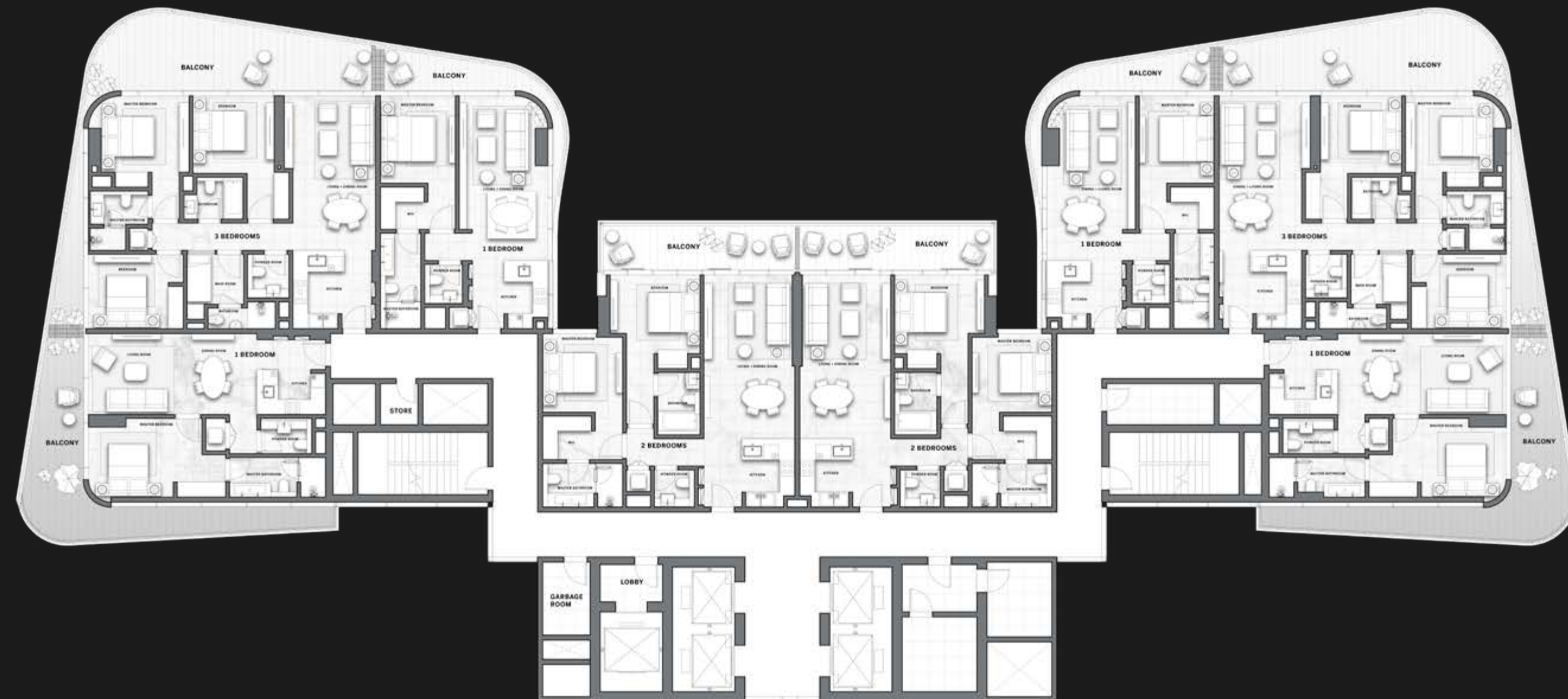
LEVELS  
18 - 19

OVERLOOKING  
THE SKY GARDEN



- ONE BEDROOM
- TWO BEDROOMS
- THREE BEDROOMS

Disclaimer: All pictures, plans, layouts, information, data and details included in this brochure are indicative only and may change at any time up to the final 'as built' status in accordance with final designs of the project, regulatory approvals and planning permissions. All accessories and interior finishes such as wallpaper, chandeliers, furniture, electronics, white goods, curtains, hard and soft landscaping, pavements, features, gym, swimming pool(s) and other elements displayed in the brochure, or within the show apartment or between the plot boundary and the unit, are not part of the unit and are shown for illustrative purposes only.



PARTIAL  
VIEWS

PARTIAL  
VIEWS

CITY VIEWS



**1-BED  
TYPE 01**

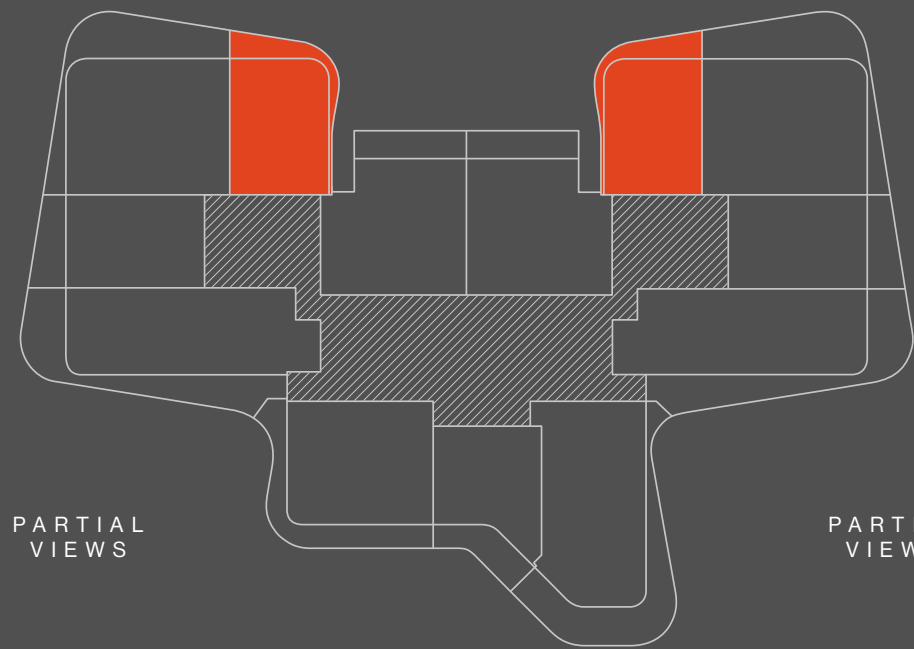
**LEVELS**  
1 - 19



BURJ KHALIFA



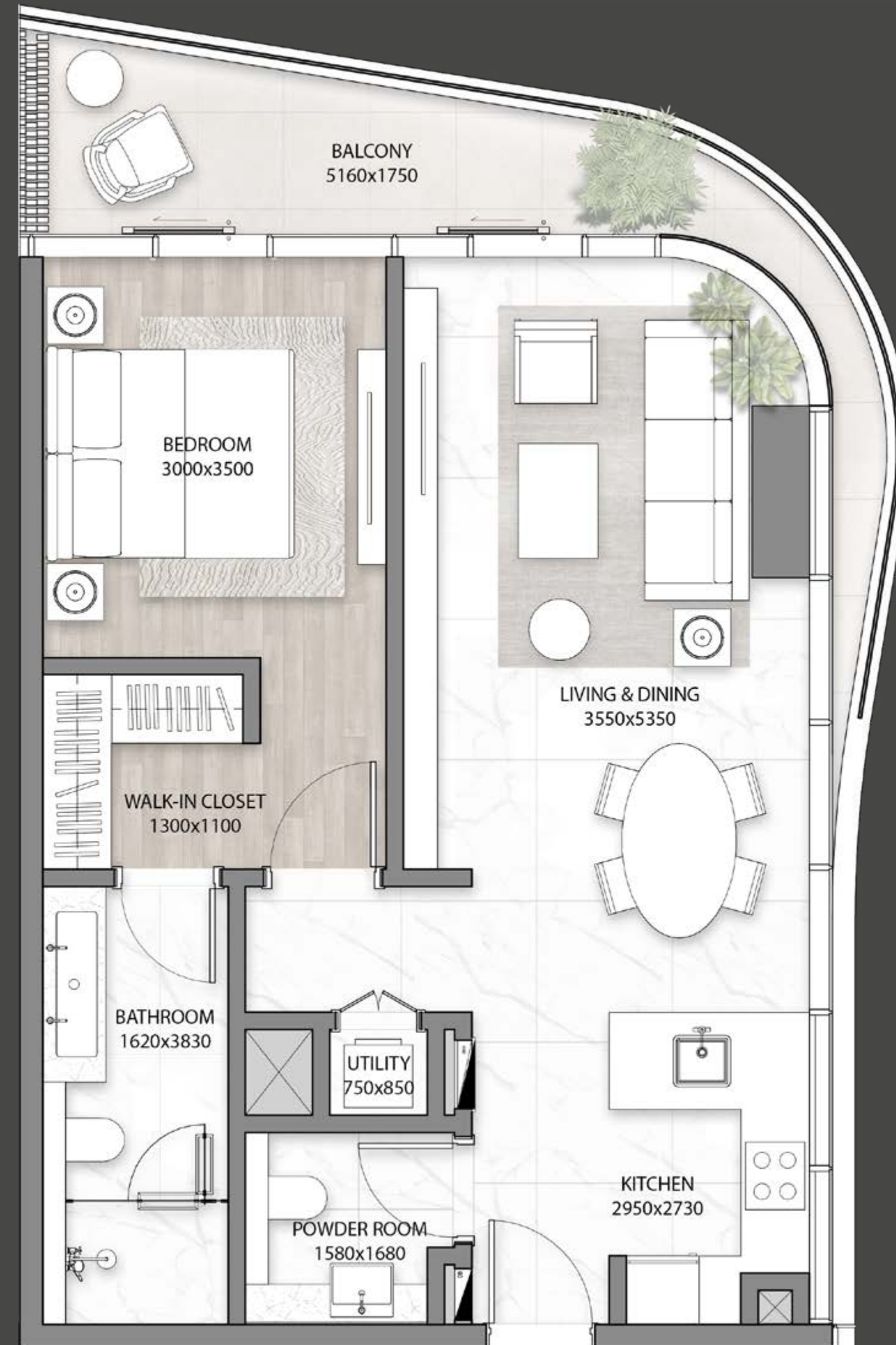
DUBAI CANAL



PARTIAL  
VIEWS

PARTIAL  
VIEWS

CITY VIEWS



<b>INTERNAL AREA</b>	sqm 66	sqft 710
<b>BALCONY</b>	sqm 10 - 22	sqft 108 - 237
<b>TOTAL</b>	<b>sqm 76 - 88</b>	<b>sqft 818 - 947</b>

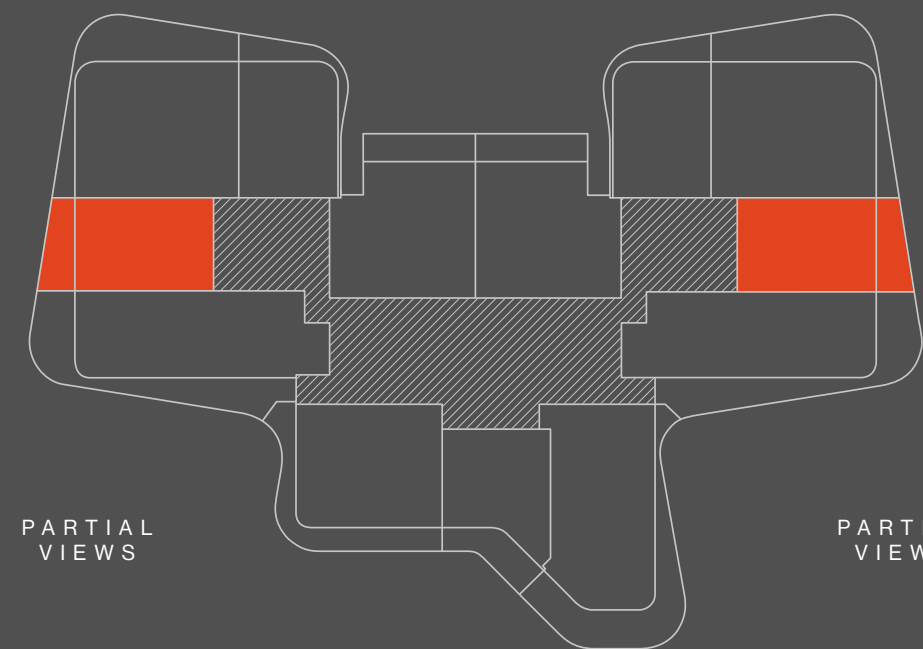
Disclaimer: All pictures, plans, layouts, information, data and details included in this brochure are indicative only and may change at any time up to the final 'as built' status in accordance with final designs of the project, regulatory approvals and planning permissions. All accessories and interior finishes such as wallpaper, chandeliers, furniture, electronics, white goods, curtains, hard and soft landscaping, pavements, features, gym, swimming pool(s) and other elements displayed in the brochure, or within the show apartment or between the plot boundary and the unit, are not part of the unit and are shown for illustrative purposes only.

**1-BED  
TYPE 02**

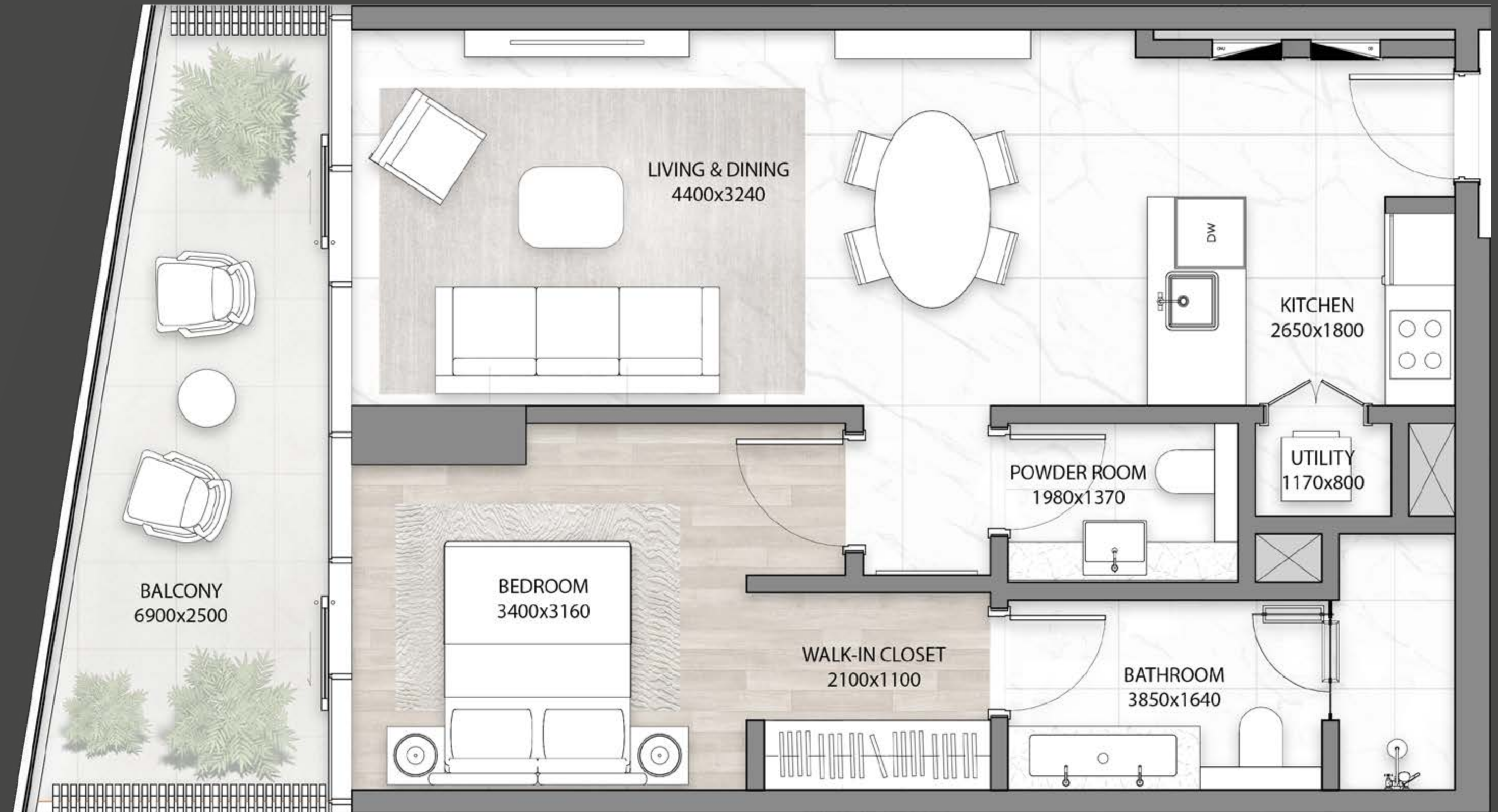
**LEVELS**  
1 - 16

BURJ KHALIFA

DUBAI CANAL



CITY VIEWS

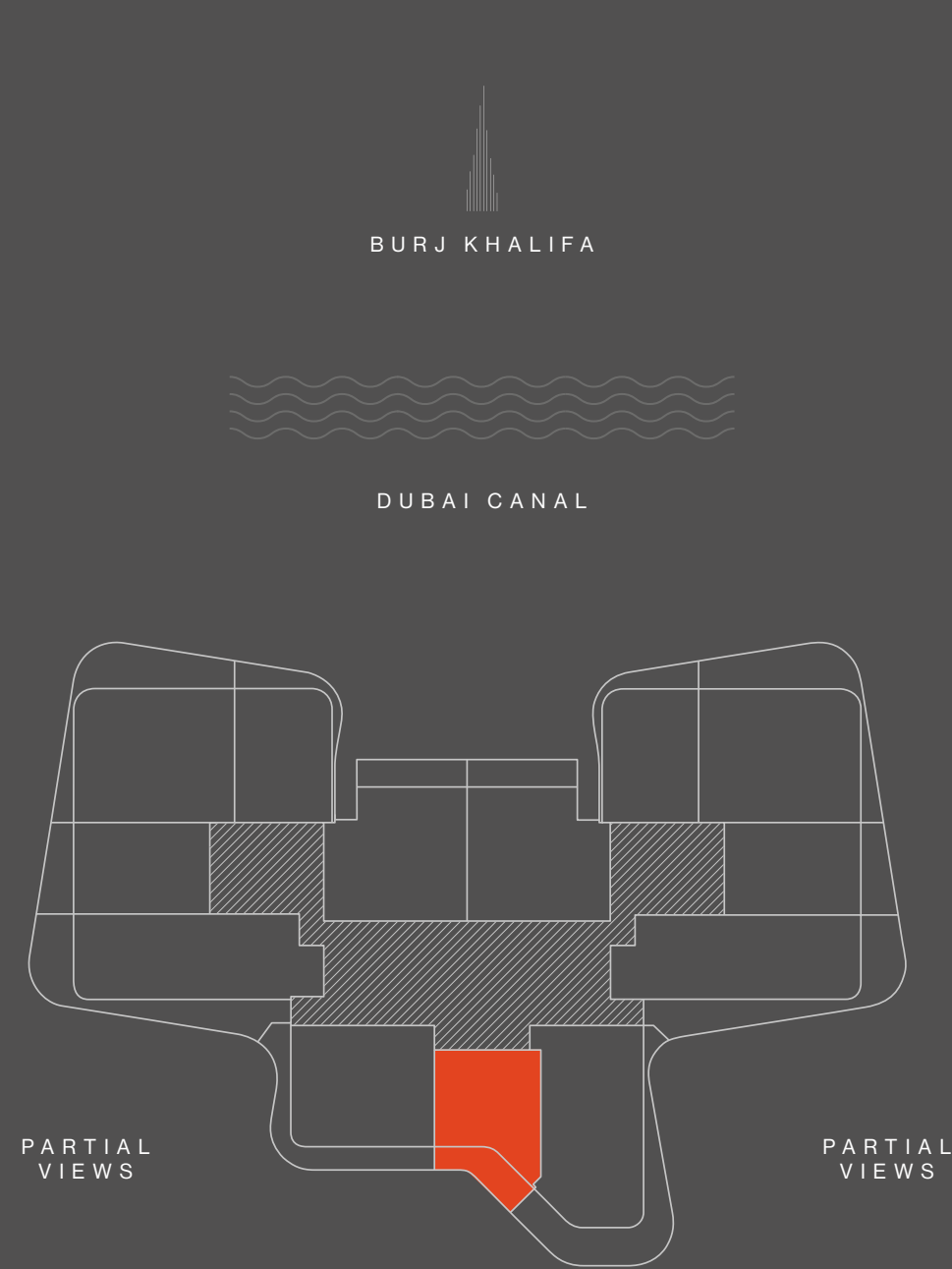


<b>INTERNAL AREA</b>	sqm 66	sqft 710
<b>BALCONY</b>	sqm 13 - 15	sqft 140 - 161
<b>TOTAL</b>	<b>sqm 79 - 81</b>	<b>sqft 850 - 871</b>

Disclaimer: All pictures, plans, layouts, information, data and details included in this brochure are indicative only and may change at any time up to the final 'as built' status in accordance with final designs of the project, regulatory approvals and planning permissions. All accessories and interior finishes such as wallpaper, chandeliers, furniture, electronics, white goods, curtains, hard and soft landscaping, pavements, features, gym, swimming pool(s) and other elements displayed in the brochure, or within the show apartment or between the plot boundary and the unit, are not part of the unit and are shown for illustrative purposes only.

**1-BED  
TYPE 03**

**LEVELS**  
1 - 15



<b>INTERNAL AREA</b>	sqm 60	sqft 646
<b>BALCONY</b>	sqm 14 - 15	sqft 151 - 161
<b>TOTAL</b>	sqm 74 - 75	sqft 797 - 807

Disclaimer: All pictures, plans, layouts, information, data and details included in this brochure are indicative only and may change at any time up to the final 'as built' status in accordance with final designs of the project, regulatory approvals and planning permissions. All accessories and interior finishes such as wallpaper, chandeliers, furniture, electronics, white goods, curtains, hard and soft landscaping, pavements, features, gym, swimming pool(s) and other elements displayed in the brochure, or within the show apartment or between the plot boundary and the unit, are not part of the unit and are shown for illustrative purposes only.

1-BED  
TYPE 04

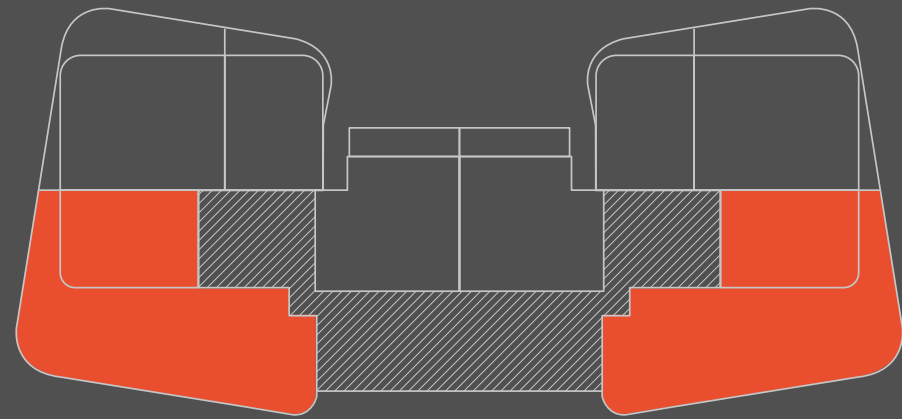
LEVEL  
17



BURJ KHALIFA



DUBAI CANAL



PARTIAL  
VIEWS

PARTIAL  
VIEWS

CITY VIEWS



INTERNAL AREA	sqm 62	sqft 667.36
BALCONY	sqm 167.59	sqft 1803.92
<b>TOTAL</b>	<b>sqm 229.59</b>	<b>sqft 2471.28</b>

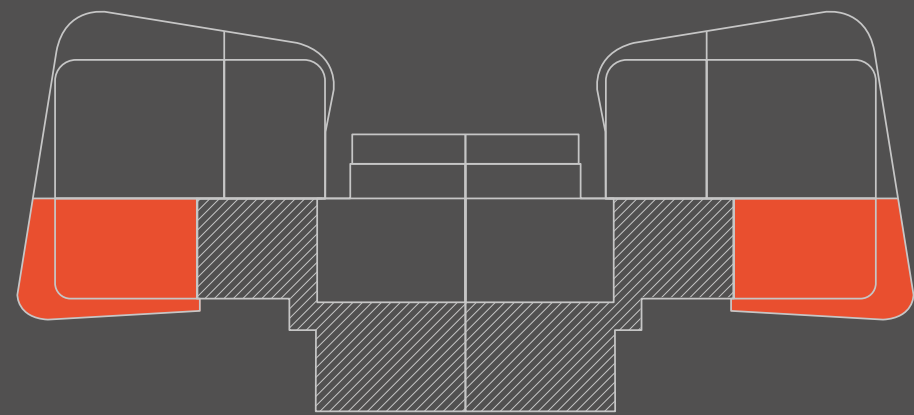
Disclaimer: All pictures, plans, layouts, information, data and details included in this brochure are indicative only and may change at any time up to the final 'as built' status in accordance with final designs of the project, regulatory approvals and planning permissions. All accessories and interior finishes such as wallpaper, chandeliers, furniture, electronics, white goods, curtains, hard and soft landscaping, pavements, features, gym, swimming pool(s) and other elements displayed in the brochure, or within the show apartment or between the plot boundary and the unit, are not part of the unit and are shown for illustrative purposes only.

**1-BED  
TYPE 05**

**LEVELS**  
18 - 19

BURJ KHALIFA

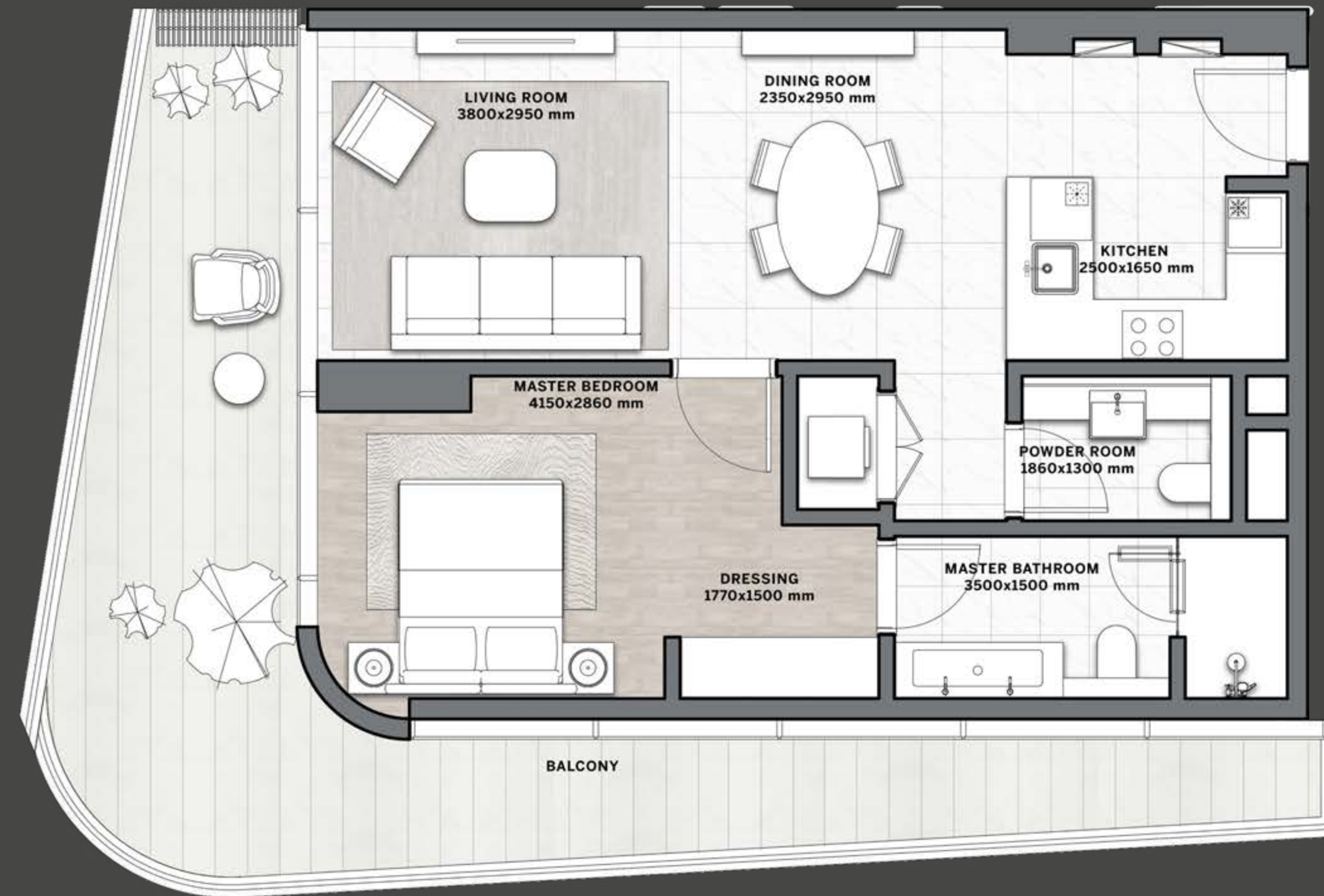
DUBAI CANAL



PARTIAL  
VIEWS

PARTIAL  
VIEWS

CITY VIEWS



INTERNAL AREA	sqm 62.59	sqft 673.71
BALCONY	sqm 27	sqft 290.62
<b>TOTAL</b>	<b>sqm 89.59</b>	<b>sqft 964.33</b>

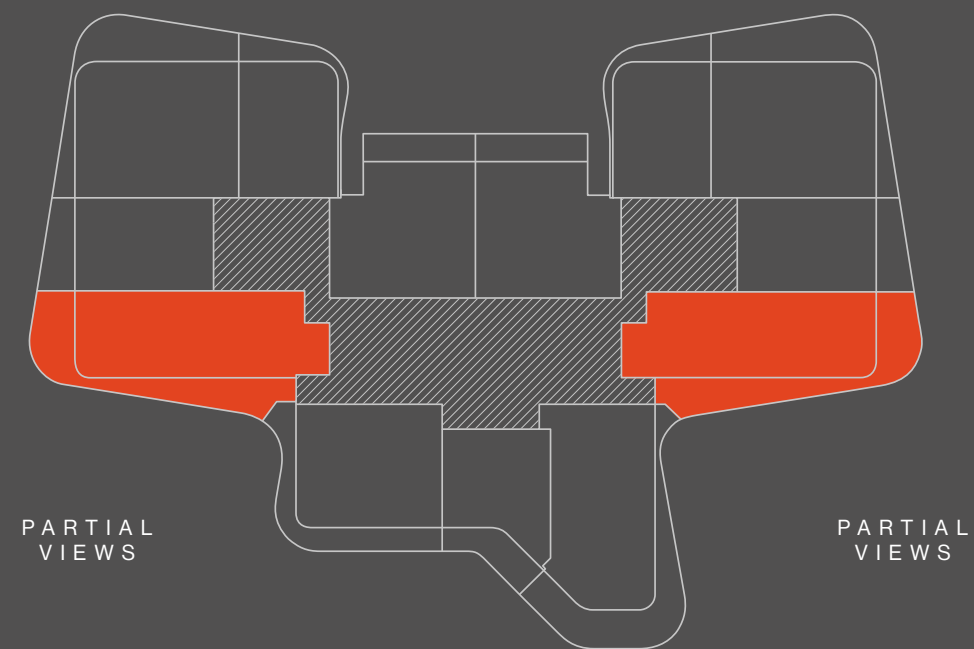
Disclaimer: All pictures, plans, layouts, information, data and details included in this brochure are indicative only and may change at any time up to the final 'as built' status in accordance with final designs of the project, regulatory approvals and planning permissions. All accessories and interior finishes such as wallpaper, chandeliers, furniture, electronics, white goods, curtains, hard and soft landscaping, pavements, features, gym, swimming pool(s) and other elements displayed in the brochure, or within the show apartment or between the plot boundary and the unit, are not part of the unit and are shown for illustrative purposes only.

2-BEDS  
TYPE 01

LEVELS  
1 - 16

BURJ KHALIFA

DUBAI CANAL



CITY VIEWS



INTERNAL AREA	sqm 108	sqft 1163
BALCONY	sqm 29 - 42	sqft 312 - 452
<b>TOTAL</b>	<b>sqm 137 - 150</b>	<b>sqft 1,475 - 1,615</b>

Disclaimer: All pictures, plans, layouts, information, data and details included in this brochure are indicative only and may change at any time up to the final 'as built' status in accordance with final designs of the project, regulatory approvals and planning permissions. All accessories and interior finishes such as wallpaper, chandeliers, furniture, electronics, white goods, curtains, hard and soft landscaping, pavements, features, gym, swimming pool(s) and other elements displayed in the brochure, or within the show apartment or between the plot boundary and the unit, are not part of the unit and are shown for illustrative purposes only.

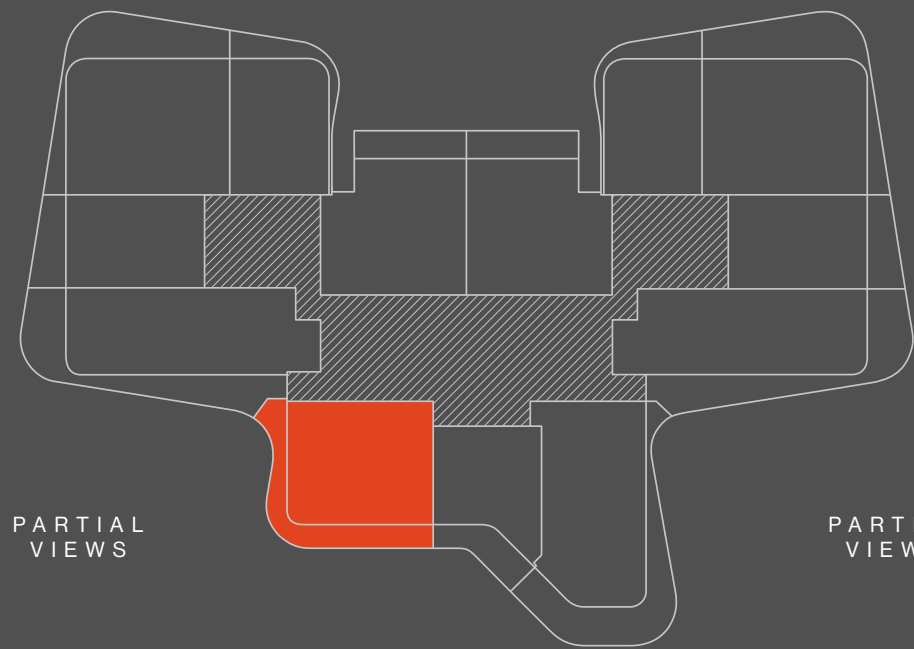
**2-BEDS  
TYPE 02**

**LEVELS  
1 - 15**



BURJ KHALIFA

DUBAI CANAL



PARTIAL  
VIEWS

PARTIAL  
VIEWS

CITY VIEWS

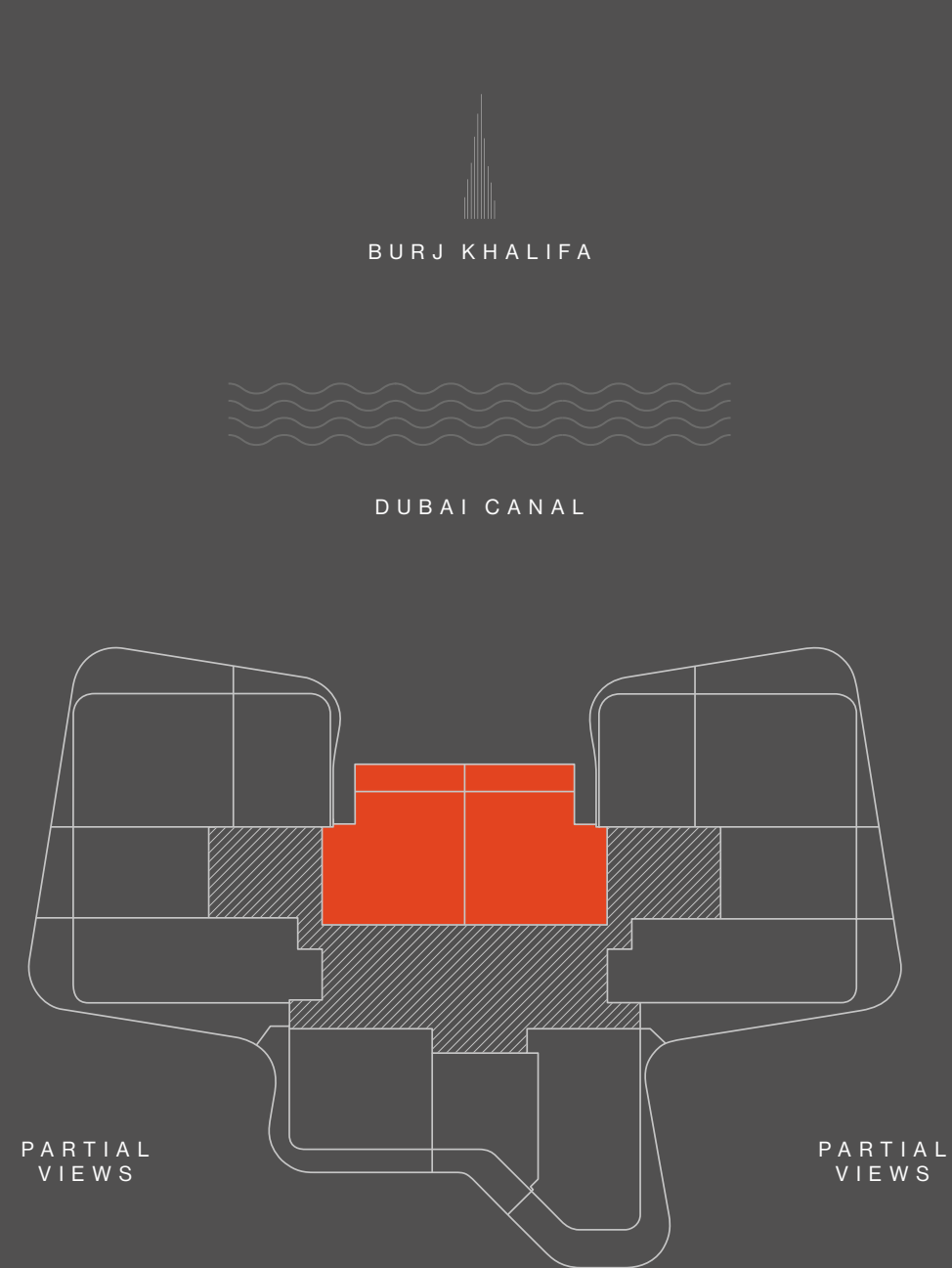


<b>INTERNAL AREA</b>	<b>sqm 91</b>	<b>sqft 980</b>
<b>BALCONY</b>	<b>sqm 26 - 28</b>	<b>sqft 279 - 302</b>
<b>TOTAL</b>	<b>sqm 117 - 119</b>	<b>sqft 1,259 - 1,281</b>

Disclaimer: All pictures, plans, layouts, information, data and details included in this brochure are indicative only and may change at any time up to the final 'as built' status in accordance with final designs of the project, regulatory approvals and planning permissions. All accessories and interior finishes such as wallpaper, chandeliers, furniture, electronics, white goods, curtains, hard and soft landscaping, pavements, features, gym, swimming pool(s) and other elements displayed in the brochure, or within the show apartment or between the plot boundary and the unit, are not part of the unit and are shown for illustrative purposes only.

**2-BEDS  
TYPE 03**

**LEVELS**  
1 - 19



CITY VIEWS



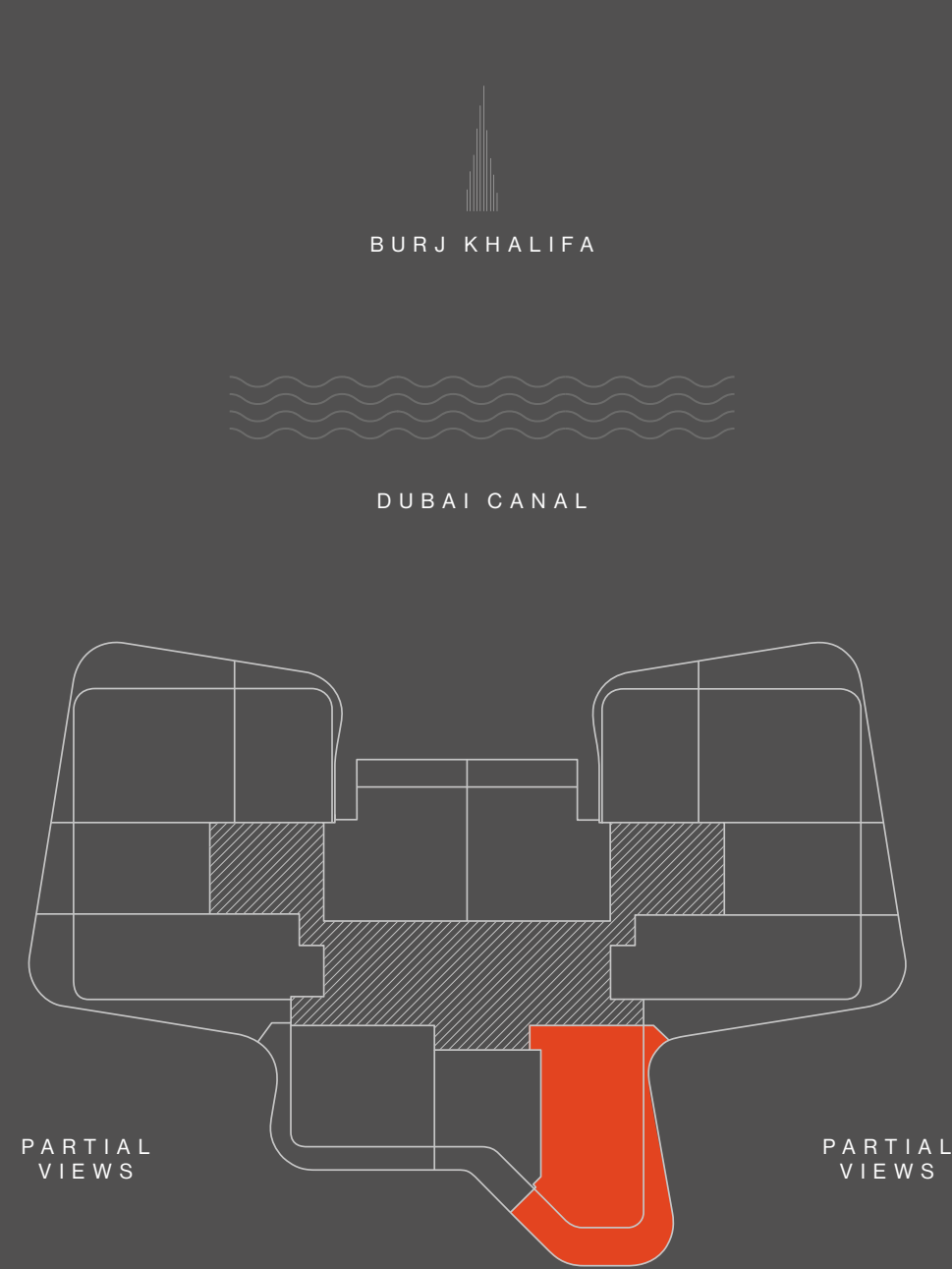
INTERNAL AREA	sqm 92	sqft 990
BALCONY	sqm 14	sqft 151
<b>TOTAL</b>	<b>sqm 106</b>	<b>sqft 1,141</b>

Disclaimer: All pictures, plans, layouts, information, data and details included in this brochure are indicative only and may change at any time up to the final 'as built' status in accordance with final designs of the project, regulatory approvals and planning permissions. All accessories and interior finishes such as wallpaper, chandeliers, furniture, electronics, white goods, curtains, hard and soft landscaping, pavements, features, gym, swimming pool(s) and other elements displayed in the brochure, or within the show apartment or between the plot boundary and the unit, are not part of the unit and are shown for illustrative purposes only.



**2-BEDS  
TYPE 04**

**LEVELS  
1 - 15**

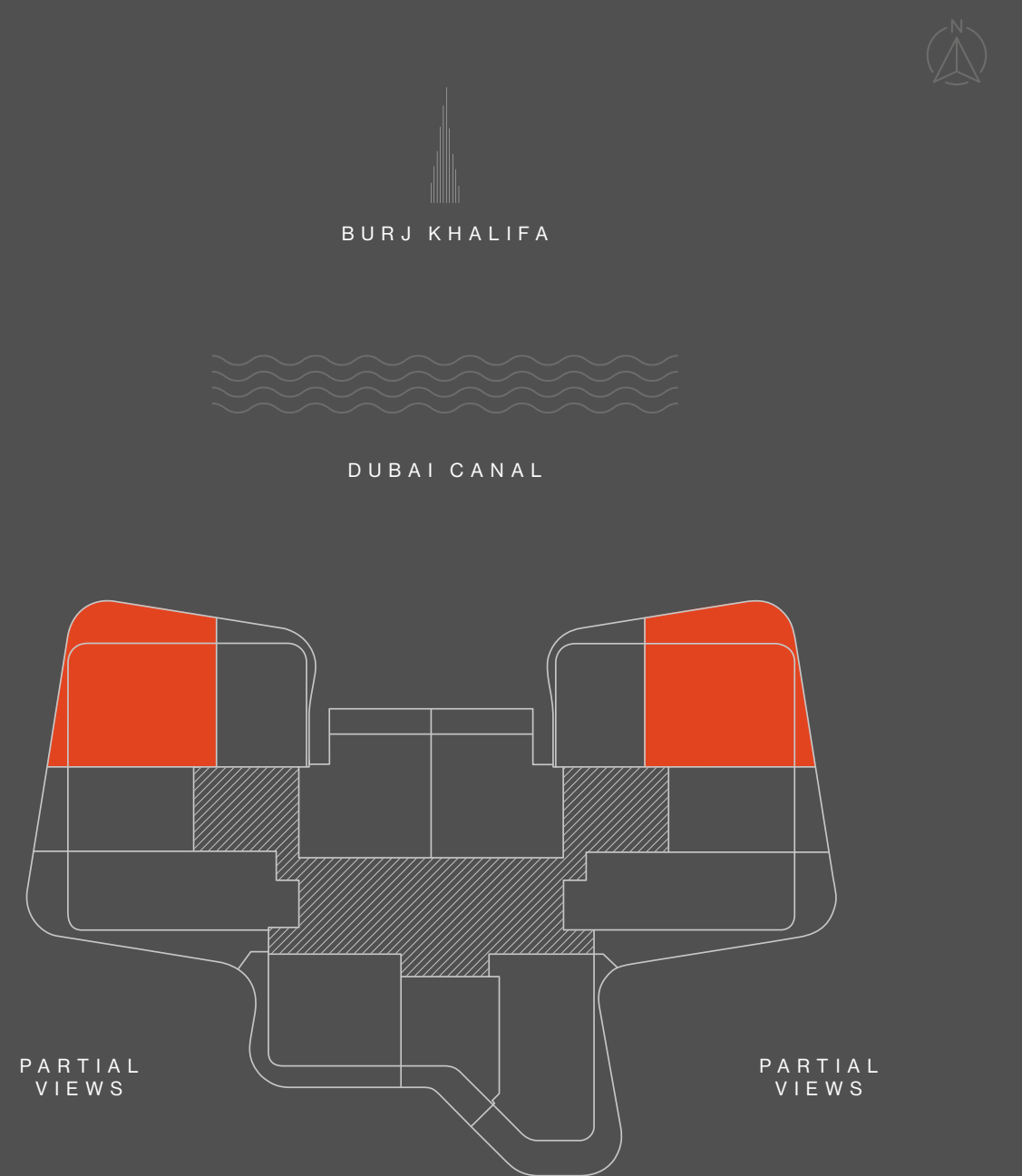


<b>INTERNAL AREA</b>	sqm 107	sqft 1,152
<b>BALCONY</b>	sqm 39 - 46	sqft 420 - 495
<b>TOTAL</b>	<b>sqm 146 - 153</b>	<b>sqft 1,572 - 1,647</b>

Disclaimer: All pictures, plans, layouts, information, data and details included in this brochure are indicative only and may change at any time up to the final 'as built' status in accordance with final designs of the project, regulatory approvals and planning permissions. All accessories and interior finishes such as wallpaper, chandeliers, furniture, electronics, white goods, curtains, hard and soft landscaping, pavements, features, gym, swimming pool(s) and other elements displayed in the brochure, or within the show apartment or between the plot boundary and the unit, are not part of the unit and are shown for illustrative purposes only.

**3 - BEDS  
TYPE 01**

LEVELS  
1 - 19



INTERNAL AREA	sqm 112	sqft 1,206
BALCONY	sqm 35 - 53	sqft 376 - 570
<b>TOTAL</b>	<b>sqm 147 - 165</b>	<b>sqft 1,582 - 1,776</b>

Disclaimer: All pictures, plans, layouts, information, data and details included in this brochure are indicative only and may change at any time up to the final 'as built' status in accordance with final designs of the project, regulatory approvals and planning permissions. All accessories and interior finishes such as wallpaper, chandeliers, furniture, electronics, white goods, curtains, hard and soft landscaping, pavements, features, gym, swimming pool(s) and other elements displayed in the brochure, or within the show apartment or between the plot boundary and the unit, are not part of the unit and are shown for illustrative purposes only.

## APARTMENT FINISHES

### FLOOR FINISHES

**General Flooring:**

Option 1: Marble, Bianco Astir  
Option 2: Marble, Calacatta Oro Classico

**Bedrooms:**

Timber flooring -  
Perspective Collection - Douplank

**Bathrooms:**

Porcelain tile - Floortech

**Balconies:**

Porcelain tile - Floortech

### WALL FINISHES

**General Stone Wall:**

Option 1: Marble, Bianco Astir  
Option 2: Marble, Calacatta Oro Classico

**Master Bedroom:**

Accent wallpaper, barkley

**Master Bathroom:**

Accent wall, marble, corinthian beige

**Bathroom Wall:**

Floortect tile

**Bathroom Accent:**

Eureka tartan tile

### CEILING TYPE

**General Areas:**

Gypsum ceiling ceiling board

**Wet Areas:**

Moisture resistant gypsum boards

### JOINERY FINISHES

**General:**

Metal, fused

**Wood Veneer:**

Woodyed veneer

**Counter Top:**

Option 1: Marble, Bianco Astir  
Option 2: Marble, Calacatta Oro Classico

### SANITARY FIXTURES

**Basins:**

Villeroy & Boch, Kohler- Ladena  
and Kolo brands

**Bathtubs:**

Rekord Rectangular by Kolo

**Shower Sets:**

Bagnodesign brand

**Kitchen Sink and Mixers:**

Kohler and Teka brands

**Accessories:**

Aquaeco, Bagnodesign, Villeroy  
& Boch, and Geesa Shift Collection

## PUBLIC AREA FINISHES

### FLOOR FINISHES

**General Flooring:**

Marble, Calacatta Oro Classico

**Washrooms:**

Provenza porcelain tile

**Gym:**

Vinyl flooring, rubber flooring

### WALL FINISHES

**General Wall:**

Reconstituted Veneer

**Shower Rooms:**

Provenza porcelain tile

### DRAPERY

**General:**

Option 1: Windows blind Smart automated  
Option 2: Fully automated drapery

### CEILING TYPE

**General Areas:**

Gypsum ceiling boards

**Wet Areas:**

Moisture resistant gypsum boards

**Lobby:**

Gypsum ceiling board - Acoustics

**Gym:**

Gypsum ceiling board - Acoustics

### SANITARY FIXTURES

**Basins:**

Kohler- Ladena

**Shower Sets:**

Bagnodesign brand

**Kitchen Sink:**

Kohler and Teka brands

## EQUIPMENTS

### KITCHEN APPLIANCES

**Hood:**

Miele or Siemens brand

**Gas Hob:**

Miele or Siemens brand

**Oven:**

Miele or Siemens brand

**Dishwasher:**

Miele or Siemens brand

**Fridge and Freezer:**

Miele or Siemens brand

**Washer and Dryer:**

Miele or Siemens brand

Plot Area	50,993
GFA	254,811
Height	B+G+4P+19
Total Saleable Area	271,524
Architect	Design Architect: Gensler AOR: ECCE
Mobilization Date	Jan-24
Current % completion	Under Design
Anticipated Completion Date	Dec-26
Anticipated Service Charges	~15 AED/Sqft

Parking's per unit	1 parking/Unit
Amenities	Pool, Gym, Multipurpose Hall and Yoga
# of Pool, Gym, BBQ Area	1 main pool and 1 kids' pool
# of Elevators	4 passenger and 1 service



EXPECTED CONSRUCTION DATE | **SEPTEMBER 2023**

EXPECTED COMPLETION DATE | **DECEMBER 2026**

# DARGLOBAL

INVEST IN LUXURY

A business card for Luxury4you Immobilien. The card is divided into three vertical sections. The left section is black with white text: 'Luxury4you Immobilien', 'Tel.: +49 821 74909 671', 'Fax: +49 821 74909 672', 'Mobil: +49 175 267 75 07', 'Email: [info@luxury4you.eu](mailto:info@luxury4you.eu)', and 'www.luxury4you.eu'. The middle section is red with a white house icon, 'BELLEVUE', 'Best Property Agents', and '2022'. The right section is black with a yellow 'immo welt' logo, 'Diamond Partner', and a diamond icon. A red stamp at the bottom left says 'NEWSLETTER JETZT ANMELDEN'.

Luxury4you  
Immobilien

Tel.: +49 821 74909 671  
Fax: +49 821 74909 672  
Mobil: +49 175 267 75 07  
Email: [info@luxury4you.eu](mailto:info@luxury4you.eu)  
[www.luxury4you.eu](http://www.luxury4you.eu)

NEWSLETTER  
JETZT ANMELDEN

BELLEVUE  
Best Property  
Agents  
2022

immo welt  
Diamond  
Partner